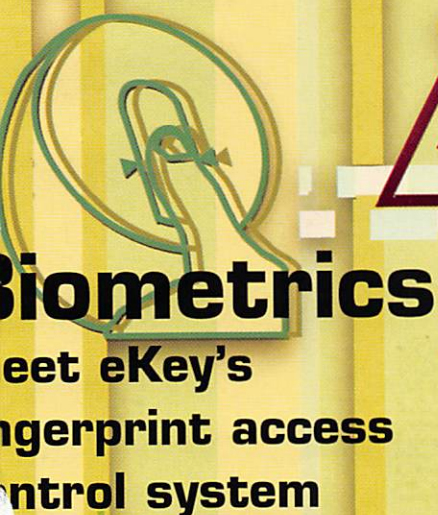


Official Publication of ALOA - An International Association of Locksmiths

# Keynotes

January 2006 [www.aloa.org](http://www.aloa.org)



**Biometrics**  
Meet eKey's  
fingerprint access  
control system



## PLUS!

More Biometrics from Wausau  
Greg Perry and Amsec  
Exploring One-Way Cylinders  
Locksmith Business Tips  
and More!

\*\*\*\*\*AUTO\*\*SCH 3-DIGIT 303

Breck H. Camp CML  
PO Box 47070  
Atlanta GA 30362-0070







# IT'S QUITE POSSIBLY YOUR MOST TRUSTED SIDEKICK.

Keep it in Good Hands® with Allstate.

As a small business owner, there are few things you rely on more than your vehicle to keep you going. Your local Allstate agent can help protect it and your small business with services you need including

quick certificates of insurance, ID cards, assistance with the claims process, and more. All from one of the most widely recognized names in the business. Are you in Good Hands®?

**1-800-859-0247**  
CALL NOW TO LOCATE YOUR  
NEARBY ALLSTATE AGENT.



**Allstate**®  
You're in good hands.



Subject to availability and qualifications. Allstate Insurance Company and Allstate Indemnity Company, Northbrook, IL. Allstate County Mutual Insurance Company, Irving, TX. Allstate New Jersey Insurance Company, Bridgewater, NJ. The "Cupped Hands" logo is a registered service mark and "Our Stand" is a service mark of Allstate Insurance Company. ©2005 Allstate Insurance Company, Northbrook, IL.



# A Name You Know

As a business owner, you know the importance of a good name. Your name is your reputation. Your name stands for all that you offer in products and services. It's a symbol of who you are. So, we thought you might like to know that Allstate, the name you know for insuring your personal vehicle and your home, also offers a business auto policy to help protect vehicles used in your locksmith business.

The following are coverages typically included in our business auto policy that might be important to you as a business owner:

## Business Auto Liability coverage

- Higher limits up to \$2,000,000 per occurrence.
- Protects you if you are legally responsible for injuries and damages arising out of the ownership, maintenance, or use of business vehicles.
- Cost is based on several factors, including garage location, type and use of vehicle, and the violation and accident activity of your drivers.
- Additional Insured coverage may be required when you contract with governmental agencies or bid on local commercial jobs.
- Generally not available on a personal auto policy.
- Usually is no charge to add an insured to a Commercial Auto policy.

## Hired Auto coverage

- Provides liability coverage for those vehicles you rent, hire or borrow for business use.
- The premium for hired auto liability coverage is based on the estimated annual rental cost.
- Tools and Special Equipment
- Provides protection to permanently attached equipment on your vehicle.
- You will need to let your agent know the value of the equipment to include in the cost of the vehicle.

You're good at your business. Your insurance company should be the same way.

Contact an Allstate agent to discuss your business auto insurance needs. To be referred to an agent, please call 800.859.0247 or email [abis0@allstate.com](mailto:abis0@allstate.com).

Subject to availability and qualifications. Insurance coverage is subject to policy terms.

Allstate Insurance Company

Allstate Indemnity Company  
Northbrook, IL

Allstate County Mutual Insurance Company  
Irving, TX

Allstate New Jersey Insurance Company  
Bridgewater, NJ

[allstate.com](http://allstate.com)

© 2005 Allstate Insurance Company, Northbrook, IL

# BETTER THAN EVER.



This **Hawkeye® Borescope** includes all of the latest upgrades for safe and vault professionals: Optics that deliver images that rival German scopes. A new mirror technology that resists scratches from insulation, asbestos, and burrs. And a mirror protection sleeve to ward off dust.

Plus the option of the **GRAND KIT** with a fully configured 7" and 17" scope in one case. Or the economy minded **LE model**.

*The red eyecup tells you that you have the scope made specifically for safe and vault professionals.*

Available from Gradient Lens resellers to the safe and vault industry only.



Gradient Lens Corporation

## PRECISION BORESCOPIES

*The next best thing to having the combination.*



# p r e s i d e n t i a l v i e w p o i n t



Dear Members,

## *Happy New Year!*

Two thousand six, a new year, a fresh start! It is important at this time of year to reflect on the past and to learn from our personal histories. Equally imperative, or even more so, is to set goals and resolve to follow through. Make sound, well thought-out resolutions. A good goal is to become more involved with our fellow man and to make this world a better place. How does an individual in the security field fit into the grand scheme of things? Make a personal inventory and then...

Do well, what you do best. Treat your customers with the respect and honesty they deserve. Become active in your local association. Run for an office; work on a committee. Get your local association on the world stage; become an advocate for ALOA affiliation. Groups from around the globe are reaching out to ALOA for information, guidance and leadership. Be a leader; run as a candidate for an ALOA office. Learn; take a class or better yet, teach a class. Devote time to family and friends; that's the "stuff" of which a good life is made. Most importantly, take care of yourself. It is only when you are a healthy, happy, whole person, can you reach out to others.

Last month I had the pleasure of attending several holiday functions. The Greater Philadelphia Locksmiths' Association had a wonderful dinner-dance. The North Jersey Locksmiths' Association held a great gathering at which my wife and I were treated royally. There, I met many enthusiastic members with lots of energy and great ideas. The Central Pennsylvania Locksmiths' Association had a family-style smorgasbord dinner. Don Shiles was the guest speaker. Don spoke about his tour in Iraq. He emphasized that regardless of what is reported in the news media, our troops are appreciated and they are making the world a better place. His views were very up lifting. Of course, each association had plenty of prizes and surprises. Each party was different, but fellowship, excitement and exchange of views and new ideas abounded. This was the social side of associations at their best!

I know it's almost six months away, but, while we're making resolutions, let's include attending ALOA's 50th in Las Vegas. It's going to be a milestone in our association's history.

Our Staff is planning the biggest and best convention yet. Don't miss out, especially on that chance to drive home the T-Bird!

Best of health, wealth and happiness for the New Year. Have a glorious 2006!

Take 'er easy!

Sincerely,

A handwritten signature in cursive script, reading "Robert E. Mock".

Robert E. Mock



**HARDWARE**  
**ARROW**  
 Corbin  
 Russwin  
**CAL-ROYAL**  
**DOR-O-MATIC**

**jackson**

**Kwikset**  
**Security**

**LCN**

**MONARCH**

**NORTON**

**Parker**

**SARGENT**

**SCHLAGE**

**VON DUPRIN**

**WEISER LOCK**

**TOOLS**

**A1 DEMAND A1**

**AABLE**

**ASP**

**AVENGER**

**BOXER**

**FRANCO**

**GROBET**

**HFL**

**HIGH TET**

**LOCKCRAFT**

**LAB**

**LOCK TECHNOLOGY**

**MAJOR**

**PRO-LOK**

**Rytan**

**Sieeking**

**STECK**

**AUTOMOTIVE**  
**A1 DEMAND A1**  
**ASP**  
**HATA**  
**DETERMINATOR**  
**STRATTEC**

**LOCKCRAFT**  
**LOCK TECHNOLOGY**  
**MAJOR**  
**PRO-LOK**  
**STECK**

**VISA**  
**MasterCard**  
**DISCOVER**

**ACCESS CONTROL**  
**ALARM LOCK**  
**CODELOCKS**  
**ARROW**  
**DETEX**  
**DOR-O-MATIC**  
**ilco**  
**LOCKNETICS**  
**COBRA**  
**ROFU**  
**Simplex**  
**VON DUPRIN**

# Why Do Locksmiths Everywhere Buy Supplies at H.L.Flake?

- \* Extremely Competitive
- \* E/Z Free Freight Minimums
- \* Same Day Shipping
- \* Service with a Smile
- \* High Fill Rate
- \* Hard to Find Items
- \* E/Z Order Web Site

**www.HLFLAKE.com**

- \* Order 24 hours a day
- \* Updated Every Business Day
- \* Extra Discount for Web Orders
- \* Personalized Inventory Lists



**8  
 0  
 0  
 \*  
 2  
 3  
 1  
 \*  
 4  
 1  
 0  
 5**

**LOG ON TO...**  
**www.HLFLAKE.com**



## BIOMETRICS 2006

### 10 Biometrics: Fingerprint Access Control

We take a close look at the many exciting advancements and advantages that come with ekey biometric systems.

### 14 Biometrics: Aspirus Wausau Hospital

Find out what happened when a major Wisconsin hospital took its security system to a biometric level.

### 16 One-Way Cylinders

Eric Costley gives us insight into the little known world of one-way cylinders and how you may gain a customer for life with a bit of know how.

by Eric Costley, CPL

### 24 Out of Time

Not enough hours in your day? Find out how you can take a proactive approach to time management.

by Claire L. Cohen, CML

### 28 The BF and the Convertible Gun Safes

Read about what Amsec has to offer in their recently introduced new line of gun safes, the BF series.

by Greg Perry, CML, CPS

### 35 New Tools

Check out how the new cost-effective bench-top marker software called Handy Andy can work for you.

## AD INDEX

Allstate .....	Inside Front Cover
Gradient Lens .....	1
HL Flake .....	3
Safetech 2006 .....	7
IR .....	13
ALOA 2006 .....	19
Ultralift .....	21
Hinge Doctor .....	23
CCL .....	25
KABA Ilco .....	27
TLA .....	29
Strattec .....	31
Dugmore and Duncan .....	33
SafeData .....	34
FKI .....	41
A&B Safe .....	42
PBP .....	42
Keedex .....	42
Turn 10 .....	42
Clearstar .....	42
ALOA Bookstore .....	43
MLANJ .....	44
CompX .....	Inside Back Cover
Hickok .....	Back Cover

## Departments

Presidential Viewpoint .....2	Executive.....5 Applicants .....6	Calendar.....8 Core .....9	Classified .....36 Associate Members .....38	Legislative .....40
----------------------------------	--------------------------------------	-------------------------------	--	---------------------





Additional contact information for the ALOA Board and most Keynotes authors is available through "Locksmith Search" on the ALOA Web site— [www.aloa.org](http://www.aloa.org) or by contacting the ALOA office at 3500 Easy Street; Dallas, TX 75247; (800)532-2562; FAX (214)819-9736; e-mail [aloea@aloea.org](mailto:aloea@aloea.org).

## Editor

Betty Henderson .....[betty@aloea.org](mailto:betty@aloea.org)

## Advertising Sales

Kim Hammond .....voice: 817-645-6778  
Fax: 817-645-7599  
e-mail: [adsales@aloea.org](mailto:adsales@aloea.org)

## Executive Director

Charles W. Gibson, Jr., CAE .....[charlie@aloea.org](mailto:charlie@aloea.org)

## Associate Executive Director

David Lowell, CML, CMST .....[david@aloea.org](mailto:david@aloea.org)

## Convention & Meetings Manager

Jo Anne Mims .....[joanne@aloea.org](mailto:joanne@aloea.org)

## Operations/Membership Manager

Mary May .....[mary@aloea.org](mailto:mary@aloea.org)

## Director of Creative Services

Betty Henderson .....[betty@aloea.org](mailto:betty@aloea.org)

## IT Operations Manager

Greg Jackson .....[greg@aloea.org](mailto:greg@aloea.org)

## Contributors

Jerome Andrews, CML  
Paul Chandler, CRL  
Claire Cohen, CML  
Brian Costley, CML, CMST  
Eric Costley, CRL

Ray D'Adamo, CML  
Billy Edwards, CML  
Dan Graffeo, CRL, CMST  
Jim Hancock, CPL  
Jeff Nunberg, CML, CMST

Randy Simpson, CML, CPP  
Robert Stafford, CML  
Dave Thielen, CML  
Greg Perry, CML, CPS

Tom Seroogy  
Charles Stephenson, CPS  
Dennis Watanabe, CML, CMST

**Mission Statement:** The Associated Locksmiths of America, Inc. is dedicated to enhancing the professionalism, education and ethics among locksmiths and those in related sectors of the physical security industry. With approximately 10,000 members in the United States, Canada and the freeworld, ALOA is poised to help members obtain the knowledge, the strength, and the confidence to perform their role in the physical security field with pride and dignity. But it is only through active involvement and participation that ALOA can fully achieve its potential—and can help members to achieve theirs.

**Policies:** Keynotes® is the official publication of the Associated Locksmiths of America, Inc. (ALOA). Keynotes® acts as a moderator without approving, disapproving, or guaranteeing the validity or accuracy of any data, claim, or opinion appearing under a byline or obtained or quoted from an acknowledged source. The opinions expressed by the authors do not necessarily reflect the official views of ALOA. Also, appearance of advertisements and new products or service information does not constitute an endorsement of products or services featured by the Association. The Association does not accept responsibility for the inaccuracy of any data, claim, or opinion appearing in this publication, due to typographical errors on the part of the authors, Association staff or its agents.

**Editor's Note:** This publication is designed to provide accurate and authoritative information in regard to the subject matter covered. It is provided and disseminated with the understanding that the publisher is not engaged in rendering legal or other professional services. If legal advice and other expert assistance is required, the services of a competent professional should be sought.

**Authors' Payment:** Payment for eligible submissions to Keynotes will be based on the following criteria: topic, time spent and past contributions. Authors who regularly submit to Keynotes® are generally paid a higher rate. The latter is especially true of authors who write to fit specific editorial needs and submit said copy by Keynotes® deadlines. As a general guideline: Average payment for a 750 word, business or 'light' technical article would be \$200. Payment for a 1500 word article involving significantly higher time and research efforts would be \$400.

Payment will not be offered for articles submitted by ALOA employees or members of the ALOA Board of Directors (unless material is of a technical nature), nor for articles submitted by a company that promote that company's products or services. ALOA reserves the right not to pay for articles submitted by an individual(s) that promote a particular company's products or services.

**Disclaimer:** The Associated Locksmiths of America, Inc., (ALOA), reserves the right to refuse any article for any reason. Additionally, ALOA reserves the right to edit, amend or modify any article submitted for publication in order to preserve technical accuracy, clarity, fairness or grammatical correctness. ALOA will make the best efforts to notify the author of any changes. The extent of ALOA's liability for any article or information contained therein will be a notice of correction or retraction in the next possible issue.

Keynotes® (ISSN 0277 0792) is published monthly except for the combined June/July issue by The Associated Locksmiths of America, Inc., 3500 Easy St., Dallas, TX 75247-6416. Telephone: (214) 819-9733; FAX (214) 819-9736; e-mail [aloea@aloea.org](mailto:aloea@aloea.org). Subscription rates for members—\$15.00 per year. Periodical class postage paid at Dallas, Texas. POSTMASTER: Send address changes to: Keynotes, 3500 Easy St., Dallas, TX 75247-6416. © Copyright 2003, All rights reserved. No part of the contents may be reproduced or reprinted in any form without prior written permission of the publisher.

## President

Robert Mock  
(856) 863-0710  
[president@aloea.org](mailto:president@aloea.org)

## Secretary

John Soderland, CML, CMST  
(414) 327-5625  
[secretary@aloea.org](mailto:secretary@aloea.org)

## Directors, Northeast

Peter Sarailian, CRL  
(201) 944-7547  
[nedirector@aloea.org](mailto:nedirector@aloea.org)  
Vernon Kelley, CPL  
(609) 771-3126  
[nedirector@aloea.org](mailto:nedirector@aloea.org)

## Directors, Southeast

Tom Gillingham, Jr., CML, CPS  
(615) 264-0747  
[sedirector@aloea.org](mailto:sedirector@aloea.org)  
Ken Kupferman, CML  
(813) 961-5784  
[sedirector@aloea.org](mailto:sedirector@aloea.org)

## Director, North Central

William Smith, RL  
(920) 893-5282  
Guy Spinello, RL  
(815) 394-1000  
[ncdirector@aloea.org](mailto:ncdirector@aloea.org)

## Director, South Central

CD Lipscomb, CML, CPS  
(903) 874-3522  
[scdirector@aloea.org](mailto:scdirector@aloea.org)

## Directors, Southwest

Gordon R. Racine, CML  
(719) 384-4707  
[swdirector@aloea.org](mailto:swdirector@aloea.org)  
Julie McCluney, CRL  
(714) 636-5652  
[swdirector@aloea.org](mailto:swdirector@aloea.org)

## Director, Northwest

Jim Jeffries, CPS  
(877) 241-6978  
[nwdirector@aloea.org](mailto:nwdirector@aloea.org)

## Director, European

Hans Meilshede, CML  
(453) 539-3939  
[eurdirector@aloea.org](mailto:eurdirector@aloea.org)

## Director, Asian

Joe J. Lee, CRL  
(215) 289-2404  
[asiandirector@aloea.org](mailto:asiandirector@aloea.org)

## Director, Associate

Paul M. Justen  
(612) 238-4646  
[asdirector@aloea.org](mailto:asdirector@aloea.org)

## Trustees

[trustees@aloea.org](mailto:trustees@aloea.org)  
Randy Simpson, CML  
(281) 240-5959  
John J. Greenan, CML, CPS  
(773) 486-2030  
William Young, CML, CPS  
(610) 647-5042

## Past Presidents

2003–2005 William Young, CML, CPS  
2001–2003 Randy Simpson, CML  
1999–2001 John Greenan, CML, CPS  
1997–1999 Dallas C. Brooks  
1995–1997 David Lowell, CML, CMST  
1993–1995 Breck Camp, CML  
1991–1993 Henry Printz, CML  
1989–1991 Evelyn Wersonick, CML, CPS  
1987–1989 Leonard Passarello, CPL  
1985–1987 Joe Jackson, CML  
1983–1985 Stanley Haney, CPL  
1981–1983 Louis LaGreco, CPL  
1979–1981 John Kerr, RL  
1977–1979 Clifford Cox, CML  
1974–1977 Charles Hetherington  
1972–1974 Gene Laughridge  
1970–1972 William Dutcher, RL  
1968–1970 Constant Maffey, RL  
1966–1968 Harold Edelman, RL  
1964–1966 William Meacham  
1962–1964 Robert Rackliffe, CPL  
1960–1962 Edwin Toepfer, RL  
1956–1960 Ernest Johannesen





# applicants for membership

## CA

Hemet

**Matthew Slusser**

San Diego

**Kamran Sajed**

Tustin

**Hitesh Patel**

## CT

Danbury

**Daniel Abruzzese**

*Sponsor: Peter Sarailian CRL*

Torrington

**Michael W. Solak**

*Sponsor: Peter Sarailian CRL*

## FL

Boca Raton

**Mike Rose**

*Sponsor: Dewayne A. Heidemann CRL*

Maitland

**Greg S. DeTardo**

Port Charlotte

**Joe Moyer**

*Sponsor: Zachary Gilmore*

## IL

La Salle

**Joseph D. Sibigtroth**

## MA

Boston

**Luciano Lopresto**

## NY

Mahopac

**Dennis Hymowitz**

*Sponsor: Peter Sarailian CRL*

New York

**Yuval Shenhar**

Poughkeepsie

**Curtis M. Ross**

*Sponsor: Peter Sarailian CRL*

## PA

Newtown

**Nicholas W. Weaver**

*Sponsor: Ronald E. Weaver Jr, CRL*

## UT

Roy

**Michael S. Thomas**

*Sponsor: Clifford D. Lipscomb CML, CPS*

## WA

Auburn

**Joseph M. Henderson**

*Sponsor: Jim L. Jeffries CPS*

Silverdale

**Kenneth W. Clapper**

*Sponsor: Jim L. Jeffries CPS*

These applicants are scheduled for clearance as members of ALOA. The names are published for member review and comment within 30 days of this Keynotes issue date, respectively, to ensure applicants meet standards of ALOA's Code of Ethics. Protests, if any, should be addressed to the Membership Department and must be signed. Active Membership applicants (a) have worked in the industry two or more years. Allied Membership (AL) applicants are not locksmiths, but work in a security-related field. Apprentice Membership (AP) applicants have worked in the industry less than two years.



FEBRUARY 27 - MARCH 4, 2006

## REACHING NEW HEIGHTS

Albuquerque, New Mexico

MARK YOUR CALENDAR NOW



When it comes to learning about the latest in safes and vaults, time is of the essence. SAFETECH 2006 features an all-new menu of classes, covering every safe topic on the globe. Don't miss out!



SAVTA • 3500 Easy Street • Dallas, Texas 75247  
(214) 827-SAFE (7233) Fax (214) 819-9736  
Email: [convention@savta.org](mailto:convention@savta.org)



# u p c o m i n g e v e n t s

<b>JAN</b>	HAPPY NEW YEAR!!		
<b>FEB</b>	04 Annual Oklahoma Master Locksmith Assoc. Distributor's Show Contact: Mike McGrew, CRL 918-333-9136 Oklahoma City, OK	10-12 Minnesota Chapter Associated Locksmiths of America Education Weekend Reservations, 651-770-2811 Maplewood, MN	27 SAFETECH 2006 Safe & Vault Technicians Assoc. Annual Convention 2/27-3/4 Contact: convention@savta.org Albuquerque, NM
<b>MAR</b>	1-4 SAFETECH 2006 Safe & Vault Technicians Assoc. Annual Convention 2/27-3/4 Contact: convention@savta.org Albuquerque, NM		
<b>APR</b>			
		<b>MAY</b>	6-7 Oklahoma Master Locksmith Assoc. 2-day session Contact: Mike McGrew, CRL 918-333-9136 Tulsa, OK • Holiday Inn Select

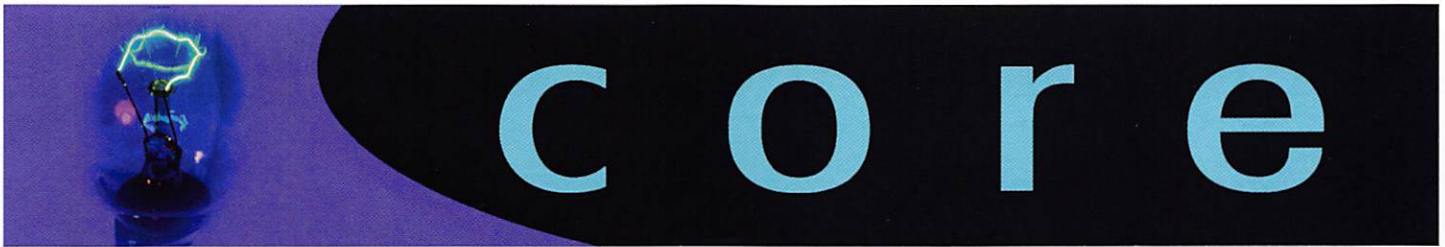
## UPCOMING ACE CLASSES

1/13-14/2006	Casper, Wyoming • ACE Classes Wyoming Locksmiths Association Contact: Darren McFarland, CRL 307-899-6018
2/11/2006	Detroit, Michigan • ACE Classes Locksmiths Security Association Contact: Robert C. Nobel, CPL 810-385-9329
2/10-12/2006	Minneapolis, Minnesota • ACE Classes Minnesota Chapter of ALOA Contact: Dana Lee, CML 612-968-4500
3/16-19/2006	Secaucus, New Jersey • ACE Classes East Coast Region Security Show Contact: Bill Timmann, CML 908-859-3135
4/22-23/2006	White River Junction, Vermont • ACE Classes Green Mountain Locksmiths Association Contact: Bradley Manchester 802-863-4153
4/22-23/2006	Fort Wayne, Indiana • ACE Classes Northern Indiana Chapter of ALOA Contact: Jeremy Rodocker, CML, CPS 260-459-1500
5/13/2006	Detroit, Michigan • ACE Classes Locksmiths Security Association Contact: Robert C. Nobel, CPL 810-385-9329

## UPCOMING PRP SITTINGS

1/12/2006	Thursday 9:00 am • Dallas, TX • ALOA Mayra Ocon 800-532-2562 x218
2/12/2006	Sunday 9:00 am • Maplewood, MN • Minnesota Chapter Dana Lee 952-887-1199
2/12/2006	Sunday 8:00 am • Ft. Worth, TX • Texas Locksmiths Association 877-TLA-INFO
2/26/2006	Sunday 9:00 am • Fairborn, OH • Ohio Valley Chapter of ALOA Bill Lockwood, CRL 937-775-2154
3/04/2006	Saturday 8:00 am • Albuquerque, NM • SAVTA '06 Satetech Mayra Ocon 800-532-2562 x218
3/18/2006	Saturday 11:00 am • Somerset, NJ • MLANJ Bill Timmann, CML 908-839-3135
3/18/2006	Saturday • Nashville, TN • Tennessee Org. of Locksmiths Chris Cyree 931-455-0202
4/01/2006	Saturday 8:00 am • Ontario, CA • California Locksmiths Association Suzanne Harmony 714-632-6800
4/06/2006	Thursday 9:00 am • Dallas, TX • ALOA Mayra Ocon 800-532-2562 x218
5/11/2006	Thursday 9:00 am • Dallas, TX • ALOA Mayra Ocon 800-532-2562 x218





## ALOA Members are Modern Marvels

The History Channel was at Hills Bros. Lock & Safe for two days in August filming in the Lock Museum of Orange County. The show, *More Hardware* will explain retail hardware beginnings with the development of sandpaper, wrenches and monkey wrenches, rope, hammers and LOCKS! Watch for comparisons between the ancient Egyptians and Linus Yale, who had the same concept in the development of the first pin tumbler padlock. Tom Nazzola has also done a piece about push button mechanical locks. Check your listings for times/dates. There will be a shared copy of the show available in the ALOA Library.

## In Memory

Donald G. Dobs, R.L., passed away peacefully on October 24, 2005. Don was the former owner of Minneapolis Lock and Key and former President of the Minnesota Locksmiths Guild.



## Drawing

ALOA Board Member, John Soderland, CML drawing a ticket for the ALOA 1-day ACE class that was presented as a door prize to the Minnesota Chapter of ALOA at their banquet on December 7th. The winner was Minneapolis Lock & Key of Minneapolis MN.

## Schlage Computer-Managed Locks Protect Rock Valley College

210 CM Locks Cut Costs, Secure Central Illinois Campus

Ingersoll Rand Security Technologies' Schlage Electronic Security announced that Rock Valley College, a community college located in central Illinois, is using 210 Schlage Computer-Managed (CM) locks to secure its Support Services building, the Student Center and a mass communications lab that is open 24 hours a day. The college has already ordered 200 more CM locks for its Stenstrom Center for Career Education, which is located off the main campus.

Schlage CM standalone locking products provide features found traditionally with online, networked systems. User-friendly software on a laptop or PDA programs the locks, access trim, and offline hard-wired controllers, which manage strikes and magnets. New users, access points and access privileges can be programmed into a CM lock in seconds. Users can select proximity, magnetic stripe, PIN or i-Button credentials individually or in combination. The CM lock also provides an audit trail for download onto a laptop or PDA.

"The ability to use one card for all systems makes my life a lot easier," reports Rick Jenks, Security Network Administrator for the college. "Card access also promotes safety and security on campus. With the electronic CM locks, we can pick and choose access areas and maintain a certain security level. Security is not compromised."

Rock Valley College chose the CM locks and proximity cards because they integrated smoothly with the college's existing Andover hardwired card access system that uses proximity cards. All systems are transparent to the user and one card works on all readers.

"There are major advantages to using the CM locks, particularly because of our many part-time teachers, who may not teach on a regular schedule," Jenks emphasizes. "We used to have to track their keys down because so many people would forget to give them back. Now we can program the locks to simply deny access after a certain date. This functionality saves us a lot of time and money."

Faculty members and staff used to have to carry several keys, and lost keys meant replacing both keys and locks. If a building master key went missing, Jenks would have to rekey the entire building.

"Manual keys are very expensive and time consuming," Jenks notes. "With the CM locks, we only have to remove the card that was lost from the system. This is a great reduction in overall long-term costs."

Jenks and one officer from the campus police department program the CM locks using a PDA and Locklink 7.0 software.

The college has found CM locks an ideal solution in applications where hard-wiring is impractical or impossible. The first building to be outfitted with CM locks at the college was the newly constructed Support Services building, which houses maintenance, the campus police department and the financial services office. The second building to be completed was the Student Center, which was undergoing renovation and required upgraded security.

Rock Valley College has already ordered 200 CM locks to secure its new offsite facility, the Stenstrom Center for Career Education. Because that building is at a remote location, campus officials decided it needed the increased security of electronic locks. Older on-campus buildings will also be retrofitted with CM locks as funding becomes available.

"We chose Ingersoll Rand because they are known to produce quality products and they've been around for a long time," Jenks concludes. "We didn't want to invest a substantial amount of the school's money in a company that might not make it in the long run. We also wanted to make sure that the company would stand behind us. Ingersoll Rand is very good with immediate assistance, which helps avoid long-term problems."

## Corporate Safe Specialists Present Check to ASF

Corporate Safe Specialists presented a check in the amount of 504.00 to the ALOA Scholarship Foundation during the 2005 ALOA Convention and Security Expo. The company also rewarded attendee winners with trips to Hawaii as follows:

Hoogerhyde Safe Co. in  
Grand Rapids, MI  
Whitlow Security in  
West Allis, WI  
Keystone Lock in  
Deerpark, NY





# Fingerprint Access Control





ekeyUSA Systems, LLC is the North American supplier for “ekey biometric systems” in Austria, where ekey TOCA products and technology are developed and manufactured. ekey biometric fingerprint access control systems come in several models beginning with a basic stand-alone system. It does not require a computer to operate or enroll/delete users for one-entry-point/function and extends to networked systems consisting of multiple readers to control multiple entry points with functions that allow access rules to be set and an audit trail showing who entered, at what time, and at which entry point they were assigned access.



ekey TOCA systems operate electronic locks or any normal open-close functioning doors, cabinets, boat lifts, home offices, garage doors, industrial machinery, or restricted areas. Both stand-alone (TOCAhome) and networked systems (TOCANet) can be used for the simplest single entry to the more complex multiple entry, residential or commercial applications.

There are 3 models of ekey TOCAhome systems and all come with 1 reader, 1 control panel, and one power adaptor. The basic system, TOCAhome, comes with 1 relay for a single-entry point or function. Models TOCAhome3 and TOCAhome pc have 3 relays and a different finger is assigned to each of the 3 relays.

TOCAhome pc comes with RS232 interface (software included) and is an affordable option if a simple audit trail is needed. The system also allows adjusting strike times and enrollment at the computer if desired. The control panel does not need to be connected to the computer to function.

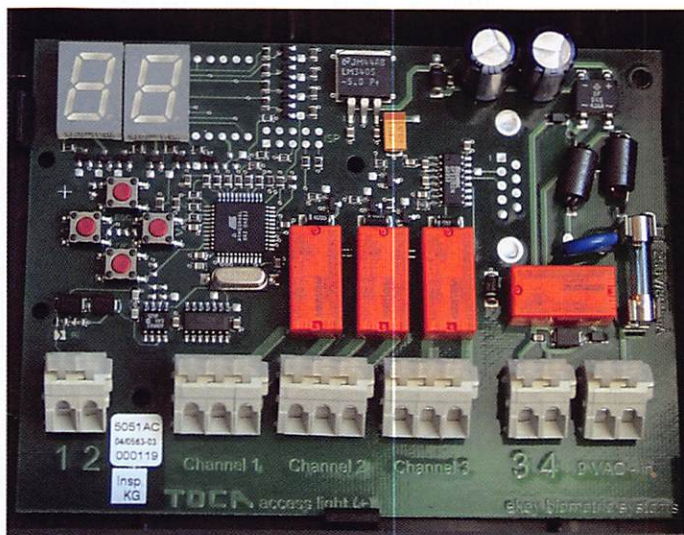
## ADVANTAGES

- Thermal scanner combined with “sweep” method makes the reader self cleaning leaving no latent fingerprint
- LED intuitive indicators on reader (green, yellow, red)
- Quick and easy enrollment procedure (Delete procedure is even faster)
- Key over-ride
- Variety of Stainless Steel reader covers for décor or extra protection
- Weather resistant reader for inside and outside use
- Fingerprint minutiae are extracted and stored as irreversible data rather than the fingerprint image
- Durable sensor resistant to dust, heat, light, pressure and electro-static discharges.
- Different fingers can be assigned for different doors/functions (TOCAhome3 and TOCAhome pc). For example, a user can use their index finger to open a door and a thumb to open a garage door.



# ENROLLING USERS FOR STAND ALONE SYSTEMS

TOCAhome stand alone systems store up to 99 fingerprint templates and users are quickly enrolled at the control panel (usually taking less than a minute). TOCA home control panels have a 4 button keypad providing backward (cancel), forward (OK/enter), and left-and-right directions following a simple menu.



An assigned individual (system administrator) enters a 2-digit code to operate or program the system. Enroll appears as EU on the panel (press OK). Then, scroll to the right to find the next unassigned user number (press OK). Assign the finger chosen to use (any of 10) then press OK. Assign the relay for that finger to operate, if model contains more than 1 relay (press OK). The LED on the reader appears yellow, meaning it is ready for fingerprint template to be stored.

Next, instruct the user to place the designated finger flat on the reader and swipe it straight down the length of the entire reader at a medium speed with slight pressure (NOT pressing or pushing). The LED on the reader will appear "green" indicating successful enrollment.

To delete users, begin from the 2-digit-code step and scroll to delete (DU). Next, scroll to the user number, which should be kept on a log sheet. Press OK and that user no longer has access rights.

## INSTALLATION

TOCAhome systems consist of the reader (approx. 2" x 4" x 2"), control panel (approx. 5" x 5" x 2"), and a power adaptor. The reader (outside unit) is mounted on a wall using a bracket with 2 screws. The unit should be installed at the recommended height of 52 inches. The control panel also comes with a bracket and 2 screws to mount on the wall. The control panel slides onto the bracket. The control panel can be installed in a control room, closet, garage, or any concealed area near a regulated AC/DC power source. Also needed is a separate power supply for the locking device.

In most installations, shielded CAT5 can be used depending on the distance between the reader and the control panel. 4 wires are used from the reader (labeled) to the control panel (labeled); 2 for power and 2 for data. Each relay has a common, normal open, and normal close. The reader is powered from the control panel, 9VAC from supplied external adaptor or regulated 12VDC. If desired, regulated 12 VDC could be used.

For more information, contact ekeyUSA Systems, LLC, 6150 53<sup>rd</sup> Avenue East, Bradenton, FL 34203. Telephone: 941-782-1227, Fax 941-256-3555. Website: [www.ekeyUSA.com](http://www.ekeyUSA.com)





IT RETROFITS VIRTUALLY ANY DOOR AND HAS ALL THE STYLE AND  
SECURITY HOMEOWNERS WANT. THAT'S WHY IT'S ALL YOU NEED TO CARRY.

### *Introducing the Schlage Accents™ Collection*

Schlage now provides you with the ability to retrofit virtually any door with the ultimate in elegance and security. The Schlage Accents collection is built on a revolutionary chassis designed to provide field-reversible levers on passage, privacy and now keyed functions. A patented adjustable through-bolt allows Schlage Accents handlesets to retrofit over 70% of competitors' current designs. Special features like these, along with concealed screws and decorative trim, allow you to reduce the inventory you carry while providing the perfect door hardware choice for homeowners who desire Schlage quality and security.

To find out more about the finest line of decorative door hardware, visit [schlageaccents.com](http://schlageaccents.com).

**SCHLAGE.**  
**ACCENTS™**  
Timeless beauty

An **IR** Ingersoll Rand business

© 2005 Ingersoll-Rand



# Aspirus Wausau Hospital Prescribes Biometric HandReaders for Security

50 HandReaders Provide Access Control for  
Medical Center's 3,000 Employees





Recognition Systems, the biometric component of Ingersoll-Rand's (IR) Security & Safety's Electronic Control Systems, announced today that Aspirus Wausau Hospital in Wausau, Wisconsin is using 50 of its biometric HandReaders to ensure only authorized individuals access hospital grounds. Aspirus Wausau Hospital serves the health care needs of residents of Wausau and a 12-county region of northern and central Wisconsin.

Over 3,000 Aspirus Wausau employees are enrolled with the HandReaders, which automatically take a three-dimensional reading of the size and shape of a hand and verify the user's identity in less than one second. Recognition Systems was named recipient of the 2004 Application Market Penetration Leadership Award for access control and time and attendance applications in Frost & Sullivan's study, World Biometrics Market.

"We chose biometrics because of the high cost of using access control cards," explains Greg Pehlke, Security Supervisor for the hospital. "We were spending \$2,000 a month on smart cards with computer chips, which employees were simply loaning to unauthorized individuals. Much of this cost, and the security breaches, have been eliminated with the HandReaders."

Aspirus Wausau Hospital's previous card-based system had reached full capacity, and it would frequently freeze up. During the transition to biometric access control, the hospital had a dual system running with both card and HandReaders. Now, however, the hospital is using only HandReaders for access control.

The hospital's 50 HandReaders, including rugged outdoor models designed to handle inclement weather, control access to the hospital. The front entrance is locked down after visiting hours and only authorized individuals can enter at that point. The HandReaders are networked and all security systems are monitored from the security department's dispatch center.

Hospital officials have found hand geometry to be more reliable than other biometric technologies they researched, Pehlke emphasized. There are fewer false reads with HandReaders and fingerprint scanners just don't work for large user populations.

The hospital will be adding six new readers this year. More departments are requesting the HandReaders so that they can eliminate keys and increase security, Pehlke said.

HandReaders handle any population volume with ease while providing impeccable reliability. With dramatically lower false reject and failure to enroll rates than other biometric technologies, the value of HandReaders grows as the number of users and/or transactions increases. They are recommended for outdoor applications.

## About Recognition Systems

With over 100,000 hand geometry units throughout the world reading millions of hands each day, IR Recognition Systems, founded in 1986, is the pioneer and only manufacturer of the leading two biometric technologies, hand geometry and finger scan. The world sales leader of biometric verification devices used in access control, time and attendance and identification applications, it serves an international clientele from its headquarters in Campbell, Calif. Its website is [www.handreader.com](http://www.handreader.com). Phone is 408-341-4100. Recognition Systems is the biometric business unit of Ingersoll-Rand's Security & Safety's Electronic Control Systems. Ingersoll-Rand is a leading innovation and solutions provider for the major global markets of Security and Safety, Climate Control, Industrial Solutions and Infrastructure. Ingersoll-Rand's website is [www.irco.com](http://www.irco.com).



# One-Way Cylinders

by: Eric Costley





Some of you are probably wondering what a one-way cylinder is, and what on earth you might use it for.

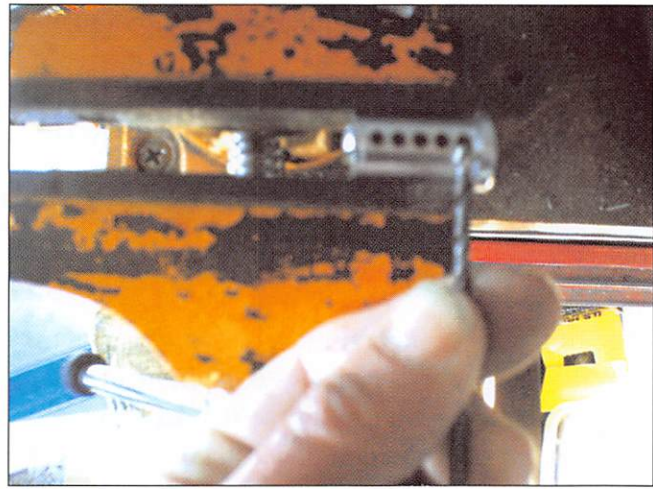
I'll give you a little background as well as a few possible scenarios that would require such a cylinder. I will also teach you how to manufacture your own in minutes, in case you ever get a call for such a beast, or dream up this as a solution for a customer's problem. If done properly you could gain a customer for life.

It's an "old secret" that dates back beyond universal pin kits, back to the times when a locksmith played his hand close to his vest and was reluctant to show even his own apprentice a few tricks!

My first "new" call for a one-way cylinder came from a high-rise apartment complex on the beach near Wilmington, NC. The exterior door of the complex was equipped with an Adams Rite latch lock, and some of the tenants had discovered that by depressing the paddle handle and turning the key toward the hinges, they could lock the latch in the open position. This was convenient for the tenant if they were having wild parties because the exterior door was open at all times. It was, in turn, frustrating for the security guard, who was responsible for locking the door at 5 p.m. so that only tenants would have access to the property.

Management had called a few other locksmiths in the area, but was daunted by the perplexed looks and expensive solutions offered by my competition. It took one good night of "I'll sleep on it and get back to you" to realize how I would tackle the situation.

Here's the beauty of a one-way cylinder: without a single master wafer, you can convert it from turning in both directions to turning in one direction only. This not only applies to mortise cylinders, it can be implemented in virtually any pin tumbler cylinder that you encounter (including some high security cylinders), with only slight modification of the plug.



After selecting a cylinder, remove the plug and pins. Select a drill bit that is the same diameter as the pin chamber, (or slightly larger,) and start drilling at a 90 degree angle from the pin chamber on the appropriate side of the plug. Be careful not to damage the existing pin chamber bore, and stop and measure frequently to achieve the desired depth.



The finished "generic" one-way, (which can be set up for either direction,) and the three operating keys: One turns both ways, one to the right only, and one to the left only.



The key which is currently inserted in the plug will allow the cylinder to turn to the right, but not to the left."



When incorporating such a cylinder into a masterkey system, one must be careful not to create interchange, but that situation, (thankfully,) is rare. If a masterkey system maintains a solid pin, (i.e. no master wafer,) in a single chamber, that chamber can be utilized to create a one-way cylinder without compromising the existing system.

One of the other inherent beauties of this systems is that the one-way keys always contain a cut which is deeper than the owner's key, so that existing one-way keys cannot be filed down to compromise the cylinder!

By cutting the plug, (I recommend that the depth be .045" to .060", to ensure that you have a steep stop on the interfering side) you can make a cylinder that turns in only one direction, as the top pin drops down too far to allow the plug to rotate in the other direction. By cutting a key that is shallower, (by whatever depth you have cut the step in your plug) you have a key that will turn in both directions. There are, however, some severe drawbacks to making a one-way cylinder.

One of these is that by creating a "stepped" shear line, you have created a lot of extra space in the plug. If the step of the new shear line is at a depth of .410" instead of the usual .500", a whopping .090" of space remains! If the original manufacturer's specifications call for depths that are managed in increments of .015", there are 6 possibilities between the "two-way" key and the "one-way" key in that pin position. While the key depths between these two may not operate smoothly, there is a possibility that one or more of them might manage to actually operate the cylinder with a little finesse'. It all depends on how accurately you have machined the new shear line.



This key will allow the plug to rotate to the left, but will be blocked when attempting to turn to the right.



The original key, which uses shallower cuts in both the first and last position, allows the plug to rotate in both directions. This would be considered the "owner's key".



July 8-16,  
2006

Las Vegas,  
Nevada

# THE POWER OF MANY

LAS VEGAS

ALO A

50

'06

1956-2006

Everybody Wants It... You MIGHT TAKE  
IT HOME!



One Lucky Member Attendee at ALOA 2006 is going home with this gorgeous mint-condition 1956 Ford Thunderbird.

A ticket will be given to each ALOA Member who registers and attends the show. Someone has to win it, and it might as well be YOU!

(Must be present to win. Exhibitors, Employees, Family Members of Employees, and nonmembers are not eligible for this door prize.)

**FKI**  
SECURITY GROUP



**Security & Safety**  
Proven Source. Proven Solutions.™

**CompX**  
SECURITY PRODUCTS



For the sake of convenience, I have taken a standard mortise cylinder and converted it to a one-way cylinder in both directions, using the first pin chamber to restrict one direction and the last pin chamber to restrict the other. It is unlikely that you would ever get a call for a cylinder which is capable of restricting rotation in both directions but unless you know the handing of the door on which you are installing it, you don't know which side of the plug to cut! By using two pin chambers and opposite sides, I've set up a "generic" one-way cylinder that can accommodate virtually any need, depending on which keys I choose to implement. Since the standard pin size is about .115", we pick a corresponding drill bit and carefully create a 90-degree "step", one on each side of the plug. One of the drawbacks to using a .090" step is that the cylinder operates with a bit of a catch, no matter which key you are using. As the step gets deeper, the edge of the cut must conform more to the original curvature of the plug to allow smooth plug rotation. This, in turn, allows for greater tolerance and key interchange. I would recommend that the stepped shear line not be more than .060", simply to restrict key interchange and to avoid sloping the step any more than necessary. (I'm sure that the photos explain it much better than I can in words!) If I had used a cut-away cylinder, the results might be a little more obvious, but seeing the plug out of the housing gives a pretty clear picture as well.

Another recommendation concerning the use of one-way cylinders: use a good solid brass cylinder. There are thousands of cheap pot-metal cylinders on the market whose tolerances are sometimes ridiculously liberal. In addition, the metal tends to wear away and distort the plug and the cylinder housing if keys that are inaccurate are utilized. Since the keys and pins are made of better material than the cylinder itself, it becomes the weak link in the chain. You can use this technique on such cylinders, but it is apt to come back to bite you later. Your customer is relying on you to provide a solution to a complex problem. They will be glad to spend a little extra for a quality cylinder, or even a new lock if you say it is required. Of course, you should charge a premium for such a cylinder modification. Even

with practice, it will take you at least an extra half an hour to set one of these up. Add your labor time right into the price of the cylinder, and add a little more for your experience and knowledge.

As a friend of mine once said, "You've made your castle of sand, now bring it home." (After all, an idea might be nice in theory, but unless you have a valid application, it remains just a useless idea.)

One-way cylinders are great for "absentee" employers, who wish to restrict re-entry to the premises. Bartenders are notorious for locking up, and then returning later to entertain their friends at the owner's expense. If the key can only lock the door preventing re-entry only the owner's key can allow after-hours consumption. I've had similar requests from tanning salons, who claimed that employees were allowing their friends to "tan for free" after hours. (How shallow is that? Jeopardizing your job for a "free" tan in a beach community? The gall of some people amazes me!)

Also, an employee who opens up in the morning cannot simply clock in, lock the door, and re-enter just before their shift is over to clock out.

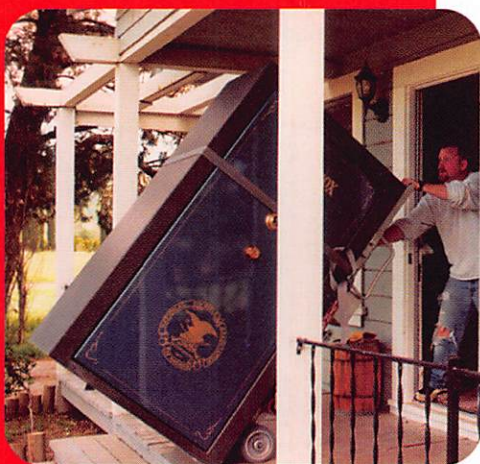
(Downside? They can leave the place totally unlocked!) Of course, the obvious solution is to only hire employees that you can trust completely, or be a hands-on owner. Still, employers will often become complacent and opt for simple and inexpensive solutions, which fix the symptom but not the problem.

The best solution for such a situation is to install an access control system on the door which is equipped with audit trail capability so that the owner knows who has activated the lock at any given time. Many such systems can also restrict the hours in which any given employee can use the lock. They are much more flexible than our simple mechanical cylinder. A lot of small business owners don't want to go the extra expense for such a system, primarily because they are usually renting the space. Still, it doesn't hurt to suggest the "best" (and more profitable) scenario before resorting to a



# ULTRA LIFT<sup>T.M.</sup>

## HIGH PERFORMANCE POWERED HAND TRUCKS



ULTRA LIFT supplies the power — so you don't have to. One person can safely and easily handle loads that usually require 2 or 3 people, even up or down stairs. Two people can handle most safes to 1500 pounds. If safety is your concern, **ULTRA LIFT** is the best move you'll ever make!

### OPERATOR SAFETY

Injuries can be virtually eliminated. Ultra Lift does the lifting so that operator effort required to complete a move is minimized. Heavy loads are broken back with ease. The operator stays in control by using a combination of motor power, balance and leverage in every phase of a move.

### REDUCE LABOR COSTS

Fewer people are required for any move with Ultra Lift. Manpower can be scheduled more productively. Labor savings often pay for the Ultra Lift in one month.

### ELIMINATE DAMAGE

Loads are broken back, set down and moved under power with maximum leverage and operator control. Gentle handling eliminates bumps, bounces and damage to the load and premises.

### INCREASE PROFITS

Increased operator safety, reduced labor cost and elimination of damage to the load and premises all contribute to significant increases in profits.



FOR LITERATURE, VIDEO OR ON-SITE  
DEMONSTRATION, WRITE OR CALL:

### ULTRA LIFT CORPORATION

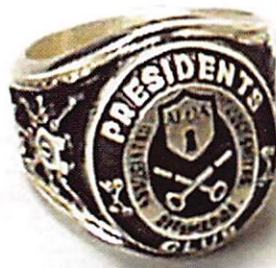
475 STOCKTON AVENUE, UNIT E  
SAN JOSE, CA 95126  
800-346-3057  
408-287-9400  
FAX 408-297-1199  
E-mail: [info@ultralift.com](mailto:info@ultralift.com)  
[www.ultralift.com](http://www.ultralift.com)

U.S. PATENT 4,570,953



# Wear the RING of a KING

Member Name	Sponsorships	
Kwok-kei Leung	220	Peter R. Hall
Henry W. Raymond	91	William P. Grant CRL
Yuriko Yanai	82	James E. Gruber CPL
Mary S. Ohmit CPL	66	Evelyn V. Wersonick CML, CPS
Charles C. Robertson CML	65	Joseph P. Ferrero CML
William Lee CRL	62	Gary F. Teams CPL
Jack Hobin CPL	51	Kenneth E. Kim CRL, CPS
Clifford D. Lipscomb CML, CPS	52	William J. McElheney CML
Michael B. Groves	48	John W. Soderland CML, CMST
C. Allan Halverson	40	Michael E. Jordan Jr, CML
David M. Troiano	51	Jon B. Griswold CML
Myeong-Rae Cho	38	Brian J. Reetz
Jim Williams CRL	42	John A. Ilk CRL, CPS
David M. Lowell CML, CMST	36	Russell P. Fuller CRL
Salvatore J. Dulcamara CML	36	Robert C. Rodocker CPL
Dana L. Barnum CML	35	John J. Greenan CML, CPS
Barry K. Leas CRL	35	Steve L. Cothron
Danny W. Rudd CPL	31	Leonard J. Passarello CPL
Larry A. Warnick CML	31	Bruce J. Tarbet CML, CPS
Eugene R. Altobella Sr.	31	John D. Cannon CML
Jeanne G. Lodge CML	30	Paul M. Souber
Robert D. DeWeese CML	31	James T. Brickler CPL
Scott L. Henke CPL, CPS	29	Calvin G. Harris CML
Dallas C. Brooks	28	Frank D. Hartung CML
Breck H. Camp CML	27	Rolando Bouza
Lawrence F. Smith Jr, CML	27	John F. Engel CRL
John C. Elliott Jr, CML, CPS	28	Richard C. Sievers
Marian M. Swann CRL	27	Brooke P. Barry CRL
James M. Watt CML, CPS	26	William J. Wickward CML
Robert W. Duman Sr, CML	31	Raymond C. Lusk CML
William L. Young CML, CPS	33	Robert M. Massard CRL, AHC
Anthony J. Ramunno CML, CPS	24	Gregory L. Perry CML, CPS
Jeffrey S. Nunberg CML, CMST	26	Eric F. Veal
J. Thomas Hood CML	26	Barry L. McMenimon CRL
Ken Dale	26	Thomas J. Demont CML, AHC
Robert H. Stafford CML	25	Basil W. Shannon CPL
Philip A. Rovenolt CPL	25	Ralph O. Warren CML
William T. Beranek	29	Gordon R. Racine CML
John L. Shandy CML	25	Kevin R. Wilson CML, CPS
Elvis D. Hammerschmidt CPL	25	Timothy K. Chow
Jerome L. Cohen CML	22	Dale L. Knowles CPL
Peter K. Gauthier CPL, CPS	22	Timothy J. Moore CRL
Man-Soo Seo RL	23	Andrew A. Edmunds CML, CPS
James J. Cawby CML, CPS	22	Daniel S. Enriquez CRL
James L. Hancock CPL	29	Gene Eldridge CPL
Hans Meijshede CML	25	Ronald P. Riggins CML
John S. Dorsey CML, CPS	20	Charles E. Haas CML
Thomas G. Vandersteen CML, CPS	19	Robert E. Mock
Peter Sarallian CRL	29	Lester S. Brodsky
Walter W. Lascar RL	18	Larry L. Votaw CML
Keizo Takahashi CRL	18	Thomas R. Smith CPL
James E. Fowler Sr, CML	18	Todd K. Ladwig CML, CPS
David C. Harris CML	18	William T. Straub CML
Ronald E. Heidzig	18	Randy L. Hutchison CRL
Joe J. Lee CRL	18	Richard T. Johnson CPL
Takashi Kuwana CRL	19	Vincent L. Forman CML, CPS
Eugene R. Altobella Jr	17	Carroll T. Croson Jr
Ernest W. Wright	18	Marlan E. Sagar
		Andrew S. Dennison CPL, CPS



## How can I join the President's Club?

You can earn a membership in this prestigious club by recruiting just 10 new members for ALOA.

\*Any ALOA member may participate.

## What do I get?

When you recruit 10 members, you receive a handsome blue blazer with a President's Club crest.

For each additional five members you recruit, you receive a lapel pin with gold-filled numbers, indicating your recruiting successes.

You also get the satisfaction of knowing that you are helping your association, helping your industry grow, and you are helping fellow locksmiths achieve success.

## How do I get started?

Mail the form below to the ALOA office for a supply of applications (800) 532-ALOA or FAX (214) 819-9736.

One President's Club credit is awarded for each new applicant. Credit is awarded only after the membership application is approved. However, the credit will apply for the period in which the application is received.

Failure to identify yourself as the sponsor on the application form at the time it is submitted to ALOA for processing will forfeit any credit.

**Yes!** I want to join the ALOA President's Club.

Please rush me \_\_\_\_\_ applications so I can start earning credit toward membership in the club!

Name \_\_\_\_\_  
 Company \_\_\_\_\_  
 Address \_\_\_\_\_  
 City \_\_\_\_\_ State \_\_\_\_\_ Zip \_\_\_\_\_

Mail this form to ALOA • 3500 Easy St. • Dallas, Texas 75247-6416



less-expensive alternative. Your customer will respect the fact that you can give them more than one possible solution to their needs.

Will you get swamped with calls requesting these? Probably not. However, word of mouth is, was, and always will be the best advertising you could ever want and it doesn't cost you anything. All a customer ever requires (and it's a great deal, depending on the situation) is that you find a way to meet their

security needs in a timely, affordable way. As I said before, once you've showed that you can overcome the problem and the competition without duress to either you or the client, you have a customer for life and that eventually translates to money in your pocket.

Next time you encounter such a situation, remember: there IS a solution!

# THE HINGE DOCTOR

by GKL Products

## Guaranteed for Life!

**HA1** For  
Standard  
Commercial  
4-1/2" x 4-1/2"  
Butt Hinges

**HA2**  
"The HULK"  
For Residential Hinges  
**COMING IN  
SEPTEMBER**

**HA3**  
For Ball-  
Bearing &  
Larger  
Commercial Hinges

**HA4**  
For Prison  
& Institutional  
Hinges & Standard  
Spring Hinges



US Patent  
#6450003

The Hinge Doctor is a great way to repair those sagging metal doors. Slip the tool over the hinge and open the door an inch or two past the point where the tool binds against the hinge, remove the tool and check the door, which should now be working properly.

If you're a locksmith these tools will turn a profit the 1st time you use them!

Uses - schools, hospitals, commercial buildings, storefronts with butt hinges, office doors, new construction, door alignment, sagging doors, jail cells, anywhere there are commercial grade hinges.

[www.hingedoctor.com](http://www.hingedoctor.com)

**800-924-5397**

Over  
**10,000**  
Satisfied  
Customers



# OUT OF TIME ?

By: Claire L. Cohen, CML

*Are you out of time? Do you feel as though you need more hours in a day to accomplish your work?* Your time at work is precious. For the security professional, you have a great deal to do, and your time is valuable. Perhaps the answer to maximizing your productivity is to focus on how to manage time efficiently.

Does this sound familiar? You start your work day knowing exactly what you want to get done. And then what happens? You face all kinds of unexpected demands from others—from the boss, from co-workers, and/or from customers. And, if you are not careful, you spend most of your time reacting to these demands. The day, week or month is gone, and you are frustrated!

Every unscheduled phone call or potential customer walking in the door creates a modification to our planned work schedule. In a service business, many times this is extremely welcomed! However, disruptions to our routine stop us from doing what we planned to do. We need look at each interruption as it happens, and allocate time to it as we see fit. Effective time management enables us work to make sure that what happens during the unplanned visit or telephone call is what we want to happen

Don't get caught in the trap of just moaning about the things you can't accomplish. Take a proactive approach. As far as possible, control the things in your environment that you CAN control and impact your time. Your work surroundings contain factors that can either help you to work to your maximum, or hinder you from doing so. We need

to recognize the factors that can make us attempt to achieve the most from our working day. Also, we need to isolate factors that make it more difficult for us to accomplish our work and exert a positive influence over them.

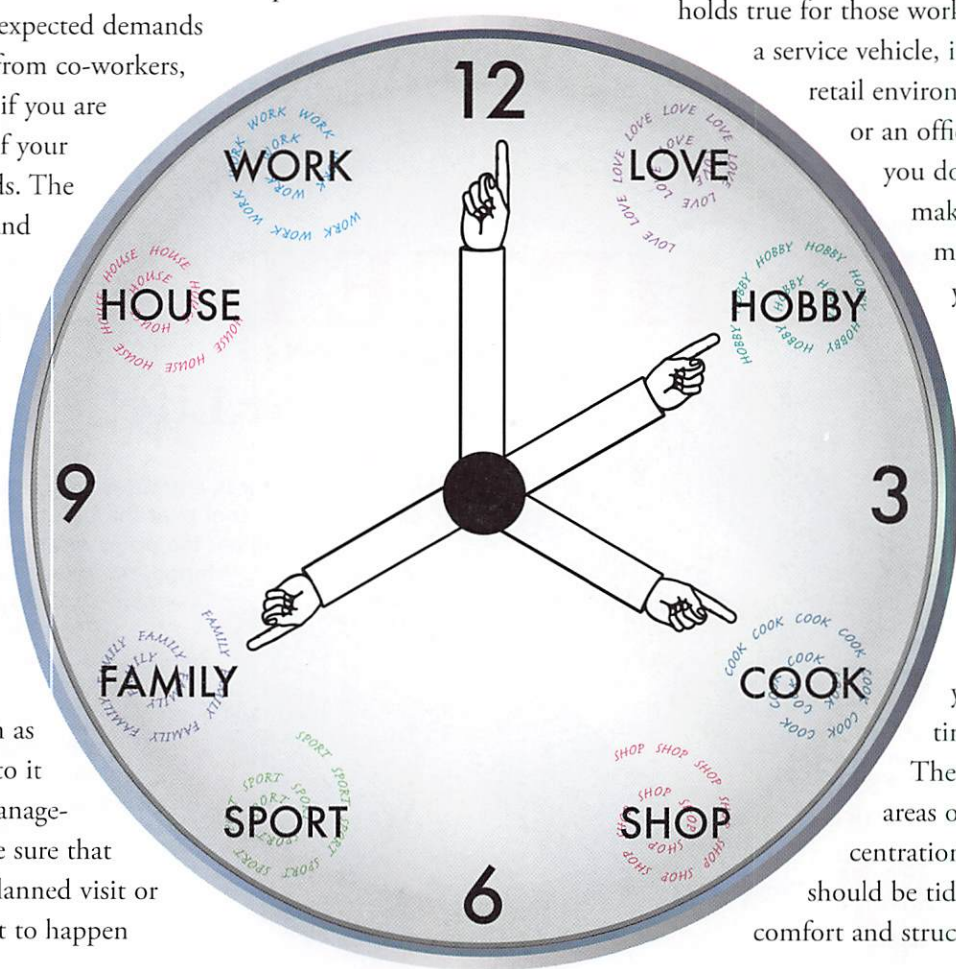
## PHYSICAL ENVIRONMENT

There is a direct relationship between the physical organization of your work space and your productivity. This

holds true for those working on

a service vehicle, in a retail environment or an office. If you don't make the most of your work space, you will not get the most out of your time.

The three areas of concentration should be tidiness, comfort and structure.



Insure that your workspace is tidy and organized. Are parts systematically organized and labeled? Can you find everything quickly? Are you wasting time looking for parts, rather than installing them?

Are you comfortable in your work environment? Your concentration level and overall ability to work will be reduced



# **SUPER SESAMEE™**

## ***Combination Locks***



### **Features & Benefits**

- Industrial Strength Combination Lock!
- Resists Hammer and Re-bar Attacks!
- Hardened Steel Full Metal Jacket!
- Hardened Steel Full Metal Jacket Shroud!
- Weather Resistant Black Electrocoating!
- 7/16" Chrome Plated Molybdenum Shackle!
- Inside Shackle Clearances: 1" and 2"!
- Shackle Pull Strength: 2,750 pounds!
- All Brass Inner Mechanism!
- Four All Brass Dials!
- 10,000 Changeable Combinations!
- Quick Delivery: Shipped from Stock!

**CCL™**  
Security Products

A Division of The Eastern Company

301 West Hintz Road  
Wheeling, IL 60090  
Telephone: 800.733.8588  
Fax: 847.537.1881  
www.cclsecurity.com



if, for example, your chair hurts your back, or you have insufficient light.

Do you have a filing system in place? Are price lists handy, forms readily available? Are templates organized so that you can access them quickly?

Whatever happened to the paperless office? The appearance of the computer was supposed to remove the need for paper. We can often be overwhelmed by paperwork. To avoid this, we need to develop techniques for efficiently handling paperwork. If you are to avoid drowning in a sea of paper, you need a straightforward and efficient technique for managing it along with document retrieval.

The physical organization of your working environment has a direct effect on your time-effectiveness. Take a good look at where you work. Don't postpone taking action on any aspect of your workplace that you can change for the better.

## TECHNOLOGY

You lead a busy and complex working life, and technology has a central role. Technology makes it possible for us to be more efficient—get more done—in many different ways. But we need to make sure that we are really controlling the technology so that it also helps us to be more effective—getting the right things done, rather than allowing it to control us. Technology will not organize your life for you. But it can be of great assistance. Learn as much as you can about the newest industry-related technologies and how it can help you.

## PREPARATION

You have to meet with team members at the start of a new project, you have to make an important telephone call to a customer and you have a regularly scheduled meeting the same day. What will you do? How you prepare for these events is the key to participating in them in a time-efficient manner. Preparation is the key to saving time. Advance preparation for your hectic day can yield major benefits.

## TIME STEALERS

There are many “time stealers”. Demands and interruptions from bosses, peers, or customers can prevent you from achieving your goals, and these must be dealt with appropriately. Not all time thieves are external. Most of us are prone to some degree of procrastination, and this can be the biggest time waster of all.

Procrastination is the thief of time. When you delay actions or a decision that you should be taking, it's your time that is being stolen. Do you find excuses for putting off or completing things that you know you should be doing? If you are faced with something you need to do, but keep putting it off, try taking three small actions immediately. These actions may replace the temptation to or habit of procrastination.

Identify the outcome you want

Take the first step

Learn from the past

Practice makes perfect. Whenever you catch yourself postponing or delaying, take the action to move you toward your objective without further loss of time.

It is possible to be working hard, without working productively. Doing a task for a co-worker may seem to be the most efficient means to get a job done. But could you spend time teaching the co-worker a skill, so that they could handle it without you the next time? Sometimes just “getting the job done” will not be the best long-term solution.

Our time is important. Time management should not be a separate activity—it should be a fundamental part of the daily way you do things. For this to happen, you need to be able to develop good time management habits and avoid bad ones. An effective use of time also involves managing your environment, harnessing your use of technology, advanced preparation and recognizing and controlling time-wasting.



# Ilco's "You Could Win a Trip to Vegas and Ultimate Lockshop Package" Sweepstakes



Visit  
[www.kaba-ilco.com/vanpromo](http://www.kaba-ilco.com/vanpromo)  
for all the details!

Sweepstakes is open to all professional Locksmiths & Security personnel, located in the 50 U.S., the District of Columbia & Canada (except for Quebec), who have an account with an authorized Ilco Products Distributor, who are eligible to make purchases of qualifying Ilco parts from authorized Ilco Distributors & who are 21 years of age or older as of 5/24/06. Void in Quebec & where prohibited by law. No purchase necessary. For the Official Rules & for an Official Entry Form, log on to [www.kaba-ilco.com/vanpromo](http://www.kaba-ilco.com/vanpromo), or see your Ilco Products Distributor. Mail entries to: Ilco "You Could Win A Trip To Vegas & Ultimate Lockshop Package" Sweepstakes, P.O. Box 222510, Hollywood, FL 33022-2510. Entries must be postmarked by 5/17/06 and rec'd by 5/24/06.

The  to your success



**ilco**

A Member of the KABA Group  
[www.kaba-ilco.com](http://www.kaba-ilco.com)



# The BF and the Convertible Gun Safes

by: Greg Perry, CML, CPS



This is the safe with the S&G dial and lock installed.



Photo 2 shows the original Amsec dial. Note that the dial starts at 00. All the current S&G dials start at 0, this is a quick way to tell which lock is installed.

Amsec recently introduced a new line of gun safes, the BF series. At the same time, they redesigned the LP6032W. When I first saw these products at the 2005 ALOA Convention and Security Expo in Chicago, I was impressed! The new BF series comes with a poured fill of insulating material like most fire safes. This provides a better fire rating than gun safes that use the more common gypsum-board liners and the price is competitive with

most other brands. In addition, they provide decent burglary protection, unlike that which common fire safes offer with sheet metal boxes. Real fire safes are designed and tested to keep the internal temperature of the safe under 350 degrees with an

outside temperature of 1800 degrees for at least one hour. Most gun safes with lined gypsum board get tested for 1200 degrees for 30 minutes. The BF gun safe line is tested to 1275 degrees for 90 minutes. A decent house fire can reach 1500

degrees at the ceiling in 15 minutes so if your gun safe is near the point of ignition, chances are it will not provide enough protection. On the other hand, depending on where the safe is located in relation to the fire, the additional protection could make the difference between a happy customer and a total loss.

Also displayed sitting next to the BF units at the show was an LP6032W. My first comment was "nice price" and it does look nice but it comes with a direct entry lock. The number of combinations changes available on this lock is very limited, however. The question also arises, "What if the customer wants a mechanical or an electronic lock upgrade?" The answer to this question might surprise you as it did me; there is a nice surprise inside. The door is drilled inside for the direct entry lock (a square hole pattern) but it is also drilled for the more common rectangular footprint safe lock (more commonly referred to as a Group 2 footprint). The outside face is also drilled for both dial-ring hole patterns. The bolt bar has an extension installed for use with the direct-entry lock or a notch in the appropriate location for the lock bolt of a mechanical or electronic lock or standard safe lock. The only thing lacking in this safe is an internal relock and/or external relocker (either internal to the lock or external). Changing to a Group 2 mechanical lock or an electronic lock will add the internal relock. Punching the spindle of the direct-entry lock will not allow the safe to open. In both cases, the lock would need to be punched off the door to gain entry. Perhaps I worry too much.

This safe has had 3 different locks installed on it in just a couple of months. The first lock from the factory is the direct-entry lock seen in photos 1 through 3. Next, in photos 4 and 5, we installed an S&G 6741 removed from a different gun safe that we upgraded to an electronic lock. This allowed us to set the standard combination we use at our shop for display safes. As luck would have it, when this safe was sold, the customer wanted an electronic lock.

It was then time to change out the lock it again. This time, we installed a Globalok ULIX-1 from Millennium Lock Corp. This lock is simple to install (after removing the old lock) as you can see in photos 6 through 10.



The process is simple. After removing the old lock, insert the plastic cable protector into the spindle hole, flush with the outside face of the door. Then, mark the tube flush with the inside door face and cut to length.

The keypad is next. Plug in the batteries, (the cable from the battery compartment is hidden behind the circuitboard of the keypad). Find the keypad to lock cable. Plug one end of the cable onto the keypad connector. Insert the cable through the spindle hole and using the two socket-head cap screws provided, attach the keypad to the door.

Finger-tighten the screws at this point. Next, insert the plastic tube in the spindle hole. Insert the hole-end of the spindle into the turn knob and push the small retaining pin through the hole in the turn knob. Insert the pin through the keypad and mark the spindle at 7/8", sticking through the back of the safe door. Remove and cut to length. Deburr it and reinstall it in the keypad. Carefully route the cable on the inside of the door and install the lock body. Plug the cable into the lock body and the keypad should beep and LEDs will flash. Reprogram the program code and the lock is ready to operate.

These gun safes are well built and should last your customer a lifetime. The BF safe should provide your customer with a good degree of fire protection. I like the ability this decent-quality low-end safe provides to upgrades.

Photo 3 is a close up of the six holes in the door for mounting the dial ring. The four outer holes are for the original lock. The 2 inner holes are the standard mounting pattern.

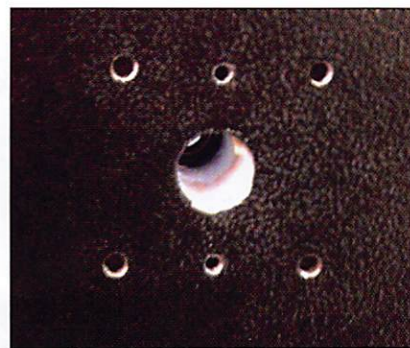


Photo 4 takes us inside for a view of the direct entry lock. The only way to change the combination on this lock is to move the connecting piece from the dial spindle to the lock 180 degrees or disassemble the wheel pack and turn the wheels over. A better idea is to order a new wheel pack or install a group 2 footprint lock.



## 43rd ANNUAL CONVENTION & TRADE SHOW

The 2006 Texas Locksmith Conference and Trade Show

Doral Tesoro Hotel in Ft. Worth, Texas

### February 7-12, 2006

- FREE CLINICS
- FREE SEMINARS
- GENERAL MEMBERSHIP MEETING

- ELECTION & INSTALLATION OF NEW OFFICERS
- PRODUCT EXHIBIT
- SCHOLARSHIP RAFFLE
- BANQUET DINNER

OR CONFERENCE OR TRADE SHOW INFO CONTACT:  
Troy Maynard, Secretary  
Texas Locksmiths Association  
P.O. Box 342  
Dripping Springs, TX 78620  
Phone: 512-264-0279 • Fax: 512-264-3060  
Email: [sec@texaslocksmiths.org](mailto:sec@texaslocksmiths.org)

FOR HOTEL RESERVATIONS CONTACT:  
1-866-33-DORAL  
Doral Tesoro Hotel & Golf Club  
3300 Championship Parkway  
Ft. Worth, TX 76177  
Phone: 817-961-0800 • Fax: 817-961-0900



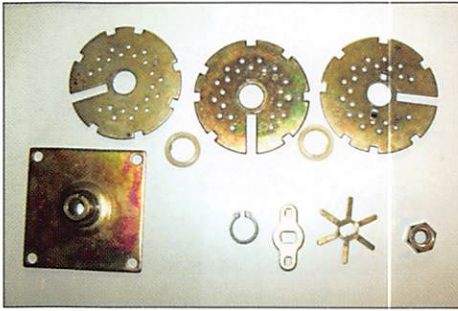


Photo 5 shows the original wheel pack disassembled. Note that the wheels are identical, the difference or what the combination is set to per wheel is where the drive pin is installed.

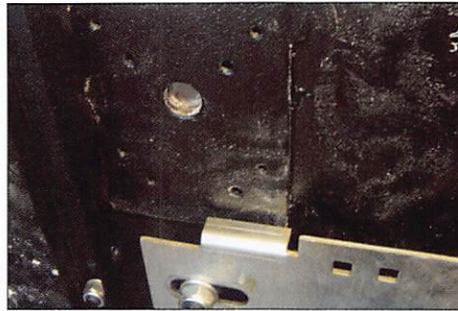


Photo 6 shows the inside lock mounting plate, here again note the two different sets of holes. The square set is for the original lock.



Photo 7 shows the door with an S&G 6741, this lock was pulled off a previous electronic upgrade.



Photo 8 is the ULIX keypad.



Photo 9 shows the cable and spindle sticking through the door.

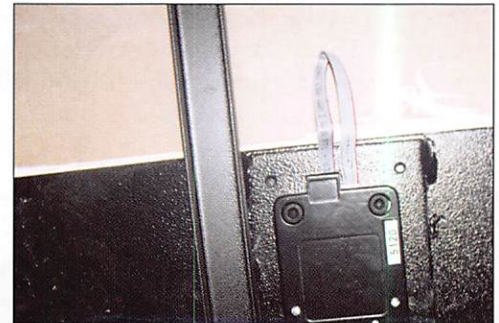


Photo 10 shows the ULIX lock body installed.



Photo 11 is the other new safe from Amsec, the BF gun safe.



Photo 12 shows a very common boltwork configuration from Amsec. Lock is mounted vertical down with a relock next to the lock body.

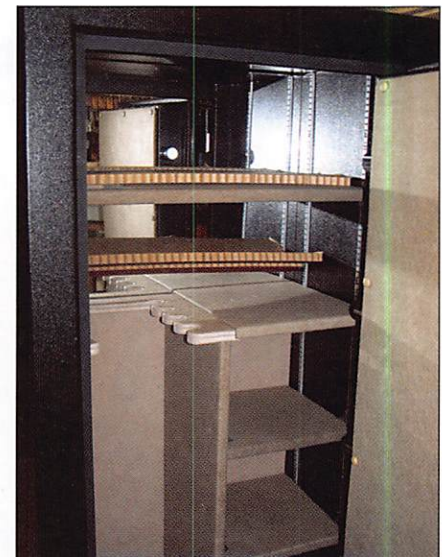
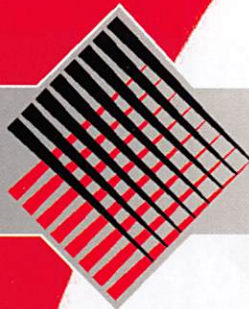


Photo 13 shows a little of the interior. Amsec has installed a mirror on the back wall to provide a better view of the interior. It also limits the ability to install a lag screw through the back wall for anchoring the safe, a method we have used in the past for extra security. But, Amsec does provide four holes in the bottom of the safe for anchoring.





**STRATTEC™**  
TRUSTED SOURCE. MANY SOLUTIONS.

# Now Available

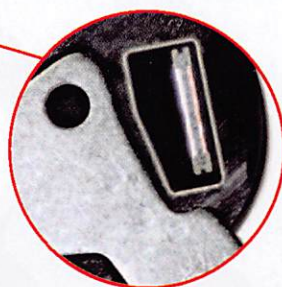
2006 GENERAL MOTORS TRANSPONDER KEYS



Part #692931

## INNOVATIVE DESIGN

- The offset position of the transponder in the head of the key maximizes the RFID signal strength by placing it closer to the ignition signal.



Part #692932

## CUTTING EDGE TECHNOLOGY

- Designed to transmit a stronger RFID signal for better overall performance



General Motors Trademarks are used under license to STRATTEC Security Corporation

**COMING SOON!** CADILLAC, PONTIAC AND BUICK VERSIONS.

Part #708884



## CODE-SEEKER™

**NOT JUST A TOOL, A MONEY-MAKING MACHINE.**

### FEATURE-FILLED!

- Easy to use, quickly connecting to the OBD port
- Includes all cables and connectors
- Adds, erases and programs keys
- Program RKE fobs (selected models)
- Obtains immobilizer code for certain models
- Fully upgradeable
- Expandable database

**ORDER YOUR MONEY-MAKING MACHINE TODAY.**

Leasing Options Available.

Contact your local distributor today.

STRATTEC SECURITY CORPORATION

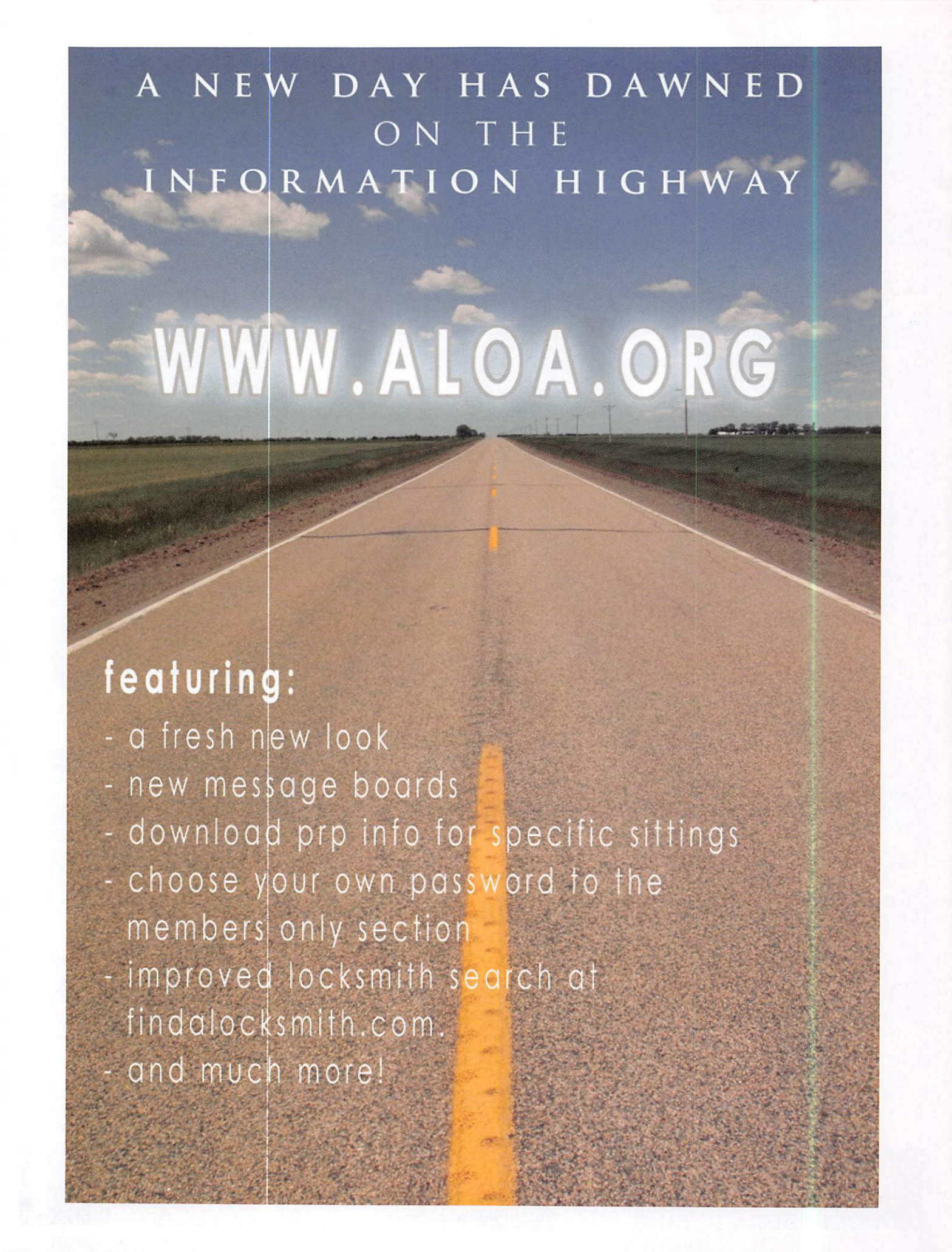
3333 WEST GOOD HOPE ROAD

MILWAUKEE, WI 53209

877.251.8798

<http://aftermarket.strattec.com>





A NEW DAY HAS DAWNED  
ON THE  
INFORMATION HIGHWAY

[WWW.ALOA.ORG](http://WWW.ALOA.ORG)

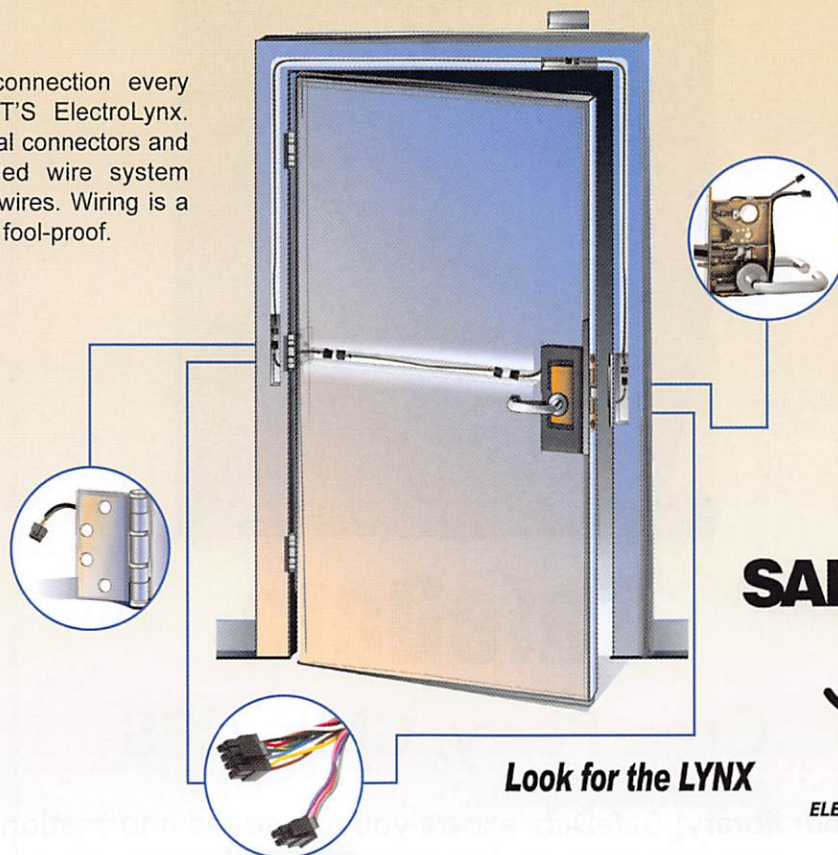
**featuring:**

- a fresh new look
- new message boards
- download prp info for specific sittings
- choose your own password to the members only section
- improved locksmith search at [findalocksmith.com](http://findalocksmith.com).
- and much more!



# Hardwiring Made Easy™

Make the perfect connection every time with SARGENT'S ElectroLynx. The plug-in universal connectors and the easy, color-coded wire system eliminates matching wires. Wiring is a snap and completely fool-proof.



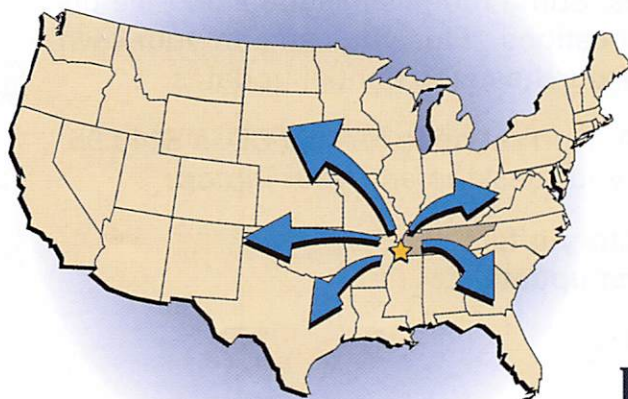
**SARGENT®**

**ELECTRO Lynx™**

**Look for the LYNX**

As part of their promise to provide innovative, fast and effective, and higher security solutions to their customers, ASSA ABLOY Group companies offer ElectroLynx, a universal quick-connect system that simplifies the electrification of the door opening.

## Dugmore introduces NEW Memphis, TN location.



Dugmore & Duncan is committed to getting our products to our customers ASAP. Our research revealed that Memphis TN has an innovative business plan to make the most of its strategic location and natural resources. It is a multi-carrier transportation hub.

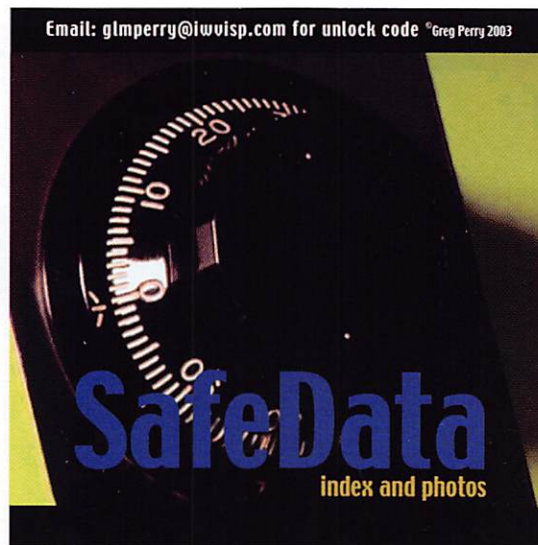
D&D has consolidated a substantial amount of its warehouse inventory into a prime Memphis location. In addition to our current strategic points of distribution, Dugmore delivers from Memphis. We are confident that this is a great opportunity for Dugmore and for our loyal customers.

**DUGMORE DUNCAN**  
SECURING YOUR WORLD

Distributor of  
**SARGENT®**  
Products

Call (888) 384-6673  
FAX (888) 329-3846 • [www.dugmore.com](http://www.dugmore.com)





# SafeData

Greg Perry, CML, CPS

**Open up your library!** SafeData allows you to find the information you've invested in, fast. This one program has over **8500 listings** of magazine, books, ClearStar Security Network posts and my personal library. Each listing includes not only the book or magazine, the issue, the title, the author and the page, but it also lists the lock and the hand of the lock (when available). SafeData lists patent dates and other trivia that may **help in identifying a container or lock.**

SafeData also has **picture folders representing over 90 different** manufactures of safes and locks with over a thousand pictures. Some models include a text file giving general information on size and relock locations. Plus you can add your own information and update it yourself or purchase the annual updates.

SafeData is available exclusively from ALOA. Normal price for this CD is \$249.95. Price includes two installs! Put it on your desktop and your laptop.

Special Introductory offer  
**includes your first update!**

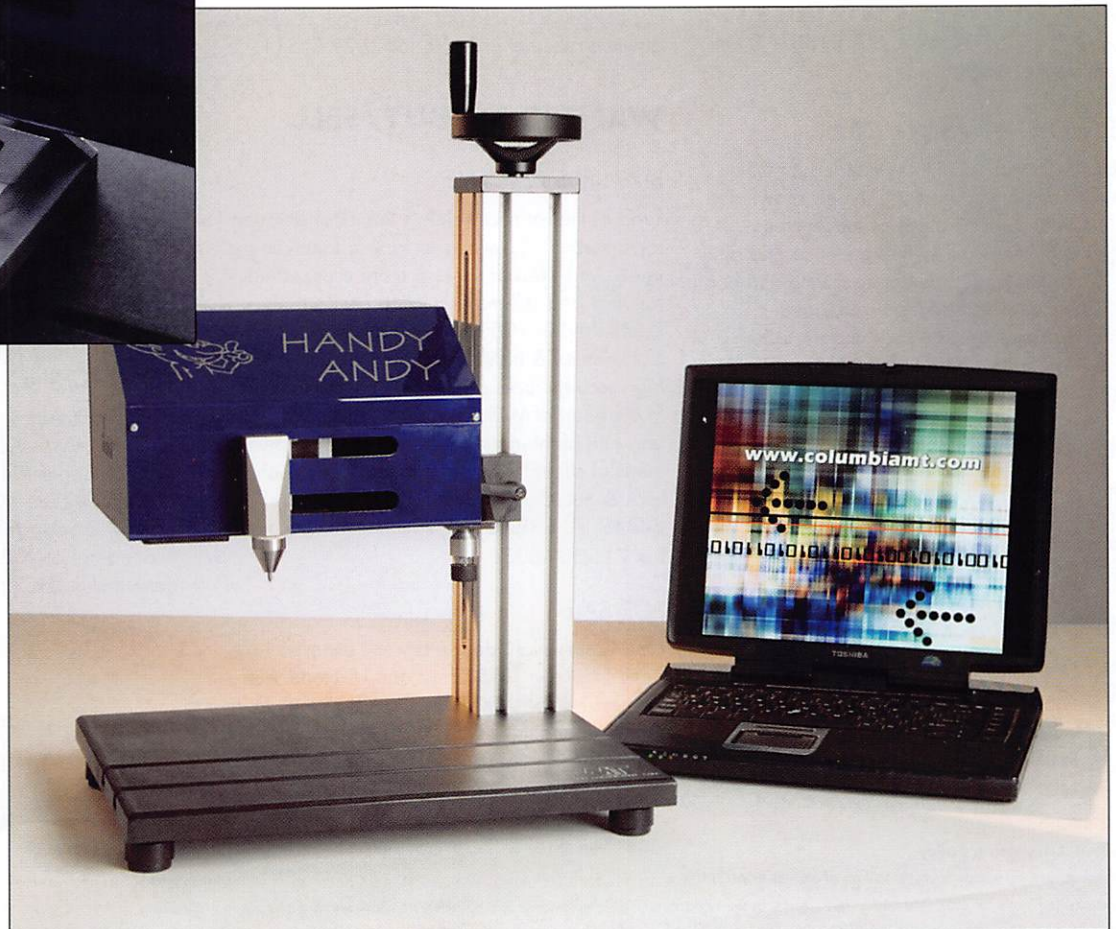
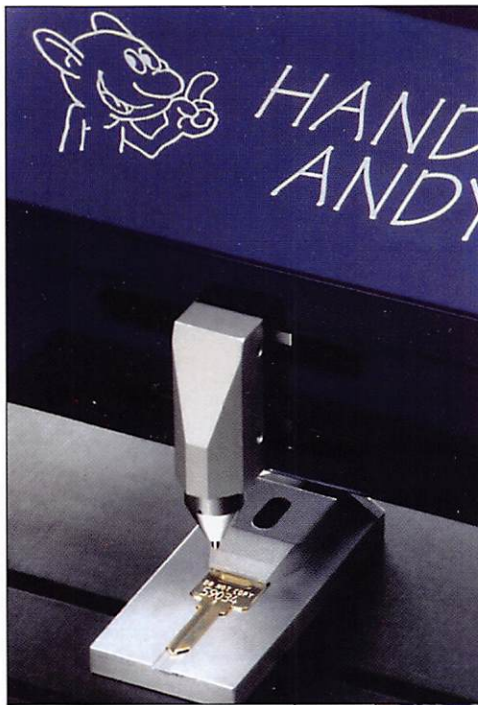
**\$199.95**

To order contact ALOA (800) 532-2562



# New Tools: Low Cost Bench Top Peen Marking System

Just hook the system up to a PC, load the software, connect an air line and it's ready to go...





# Classifieds

## EMPLOYMENT

### ACCESS CONTROL TECHNICIAN NEEDED

He/she must have 3-4 years experience in Sales & Installation of Electronic access control & cctv Installation & Service. Contact Denny Birt 1-800-352-5034

### LOCKSMITH WANTED

Busy shop in Woburn Massachusetts seeks experienced locksmiths for Auto, Commercial, Residential, Safe and Card Access work. We have a large AAA area which we cover and do transponder and high security keys. Will help train in fields you are not familiar with. Sub contractors welcome or we will supply tools and van. Great opportunity for self-motivated individual. Please sign up to join our team. Call John at 781-933-9999 or send resume to: Locks & Keys, Inc., PO Box 222, Woburn, MA 01801. Thank you for your consideration.

### LIVE, WORK & PLAY IN HAWAII

Locksmith Service Technician needed for 25-year-old company in HAWAII. Need knowledge and experience in all areas of locksmithing. Wages commensurate with experience and abilities. Great health and dental insurance and benefits. Late model van and tools provided. Mail resume to: Paradise Lock & Safe, 350 Ward Ave., Suite 106 - 417, Honolulu, HI. 96814-4004.

### EXPERIENCED LOCKSMITH WANTED

Charlottesville, VA is seeking an experienced locksmith. For information, please e-mail: snowderrow@aol.com or fax resume to 434-971-8021. Phone 434-977-5397.

### EXPERIENCED LOCKSMITH WANTED

Nationwide Security & Building Services, Inc. (NSBS) has been in business for over 30 years and is an established leader in the security

industry. In addition to providing all aspects of locksmith and security services, we also provide complete facility maintenance. We are in need of experienced and motivated locksmiths who take pride in their work. We currently have an opening for a locksmith technician working out of our Downey, CA, San Diego, CA, Phoenix, AZ and Irving, TX locations. A qualified candidate must have minimum 2 years commercial locksmith experience, excellent communication skills, a good driving record and some computer skills. Safe opening, skills in electrical, lighting, drywall, doors and gates are a plus. Benefits of being employed by NSBS include: paid vacation / holidays, medical, dental and life insurance, competitive wages, 401k plan, company truck and all tools are supplied, fun atmosphere with career growth. If you feel you are qualified and are looking for a challenging and rewarding company to work for, e-mail your resume to dawnu@nsbs.net or fax to (562) 299-1511.

## WANTED TO BUY/SELL

### BUSINESS FOR SALE

Tired of the rat race? Here's the ideal situation for someone who wants to raise a family in the upper Mid-West or seeks a more civilized environment and still make a living comfortably. Established in 1980, we specialize in Commercial & Institutional accounts with CCTV, high security locks and access control systems. In the heart of Wisconsin with excellent hospital and one of the nation's largest privately owned medical clinics. Contact Robert M. Dennee', Ace Lock & Security, PO Box 632, Marshfield, WI 54449, 715-387-3064, rdennee@tzn.net, fax 715-389-8036.

### FOR SALE

One Collier night depository self encased in steel, like new. TL15 Chest and UL Head with 25 keys - \$3500.00. One class two vault door in good condition - \$2500.00. One used 1073

diebold drive up ATM - make an offer. Many used safes please call for sizes and prices. Buyer pays for crating and freight. Contact: Thistle Safe and Lock Co., Inc., 198 Cross St., Malden, MA 02148, 781-324-1600, thistlesn@aol.com

### NORTHERN CA BUSINESS FOR SALE

You now have the unique opportunity to purchase an established lock and safe business (1958) and clientele in a fast growing college town (Chico, CA), and possibly the plaza that houses the shop. Owner is looking to retire and owns both. We have great licensed employees, three vans, and a fully stocked shop. Please fax your references and letter of interest to: Johnny's Lock & Safe 530-873-3577.

### FOR SALE

Framon II code machine, never used. Asking \$1,500.00. Telephone: 610-698-8040, Email: Foxlocknkey@aol.com

### MOBILE LOCKSMITH BUSINESS FOR SALE

Central California Locksmith Business established in 1999 and still growing. Includes van, tools, equipment, code machine, inventory. Commercial, residential and automotive accounts. Located in Fresno, CA. \$50,000. Ask for Noa Kristi 559-447-5397

### KEY MACHINES FOR SALE

HPC 1200, Abloy, KD-55 High Security, Fitmaster, Curtis Automatic #2000, Scotsman #747-X, Sager #500, Borkey #954-2, Ilco Duplicon #2585, Keil #6 1/2, Segal #815, Belsaw, 2 Schlage double-sided key punches. Phone Jerry at 208-461-4606 or email: mariemeilan@yc2.net

## Classified Advertising Policy

Classified advertising space is provided free of charge to ALOA members and for a fee of \$2.00 per word, \$40.00 minimum for non members. Classified ads may be used to advertise used merchandise and overstocked items for sale, "wanted to buy" items, business opportunities, employment opportunities/positions wanted and the like. Members or non members wishing to advertise services or new merchandise for sale may purchase a "Commercial Classified Ad" for a fee of \$4.00 per word with a minimum of \$100.00. Each ad will run for two issues. For blind boxes there is a \$10.00 charge for members and non members. All ads must be submitted in writing to the Advertising Sales Department via fax at 817-645-7399 or through an email to adsales@aloea.org by the fifteenth of the month two months prior to issue date. ALOA reserves the right to refuse any classified advertisement that it deems inappropriate according to the stated purpose of the classified advertising section.



Columbia Marking Tools and partner, J.R. Richter of Germany, are introducing a new compact, cost-effective solution for making high quality dot peen marks on steel, aluminum, brass and plastic keys and locks sets. Called the "Handy Andy™", this pneumatic bench-top marker has been designed for use by locksmiths who require the flexibility of a programmable marker at an investment that is half the cost of most lower-end conventional programmable marking machines.

Fully programmable, the Handy Andy can automatically apply serial numbering, date codes, job numbers, lot numbers, even logos. The PC software works with Windows® 95/98/2000/NT4/XP and is easy to understand and operate. Simple pull-down menus, icons, hot keys, text orientation control and point and click features minimize training time.

The marker unit is compact, measuring only 9.85 x 10.25 x 6.3-inches. A two-axis stepper motor, connected to the PC by a serial interface, connection controls the dot peen marking stylus. Pneumatic dot peen force is 14.5 psi maximum, which allows for marking fragile parts. The Handy Andy marking unit and software can be purchased for \$3,000.

Optional features include a 10 x 10-inch table with a vertical height-adjustable post that mounts the marking unit. Vertical height adjustment is up to 7.9-inches.

Columbia Marking Tools is a leading designer and manufacturer of metal and plastic marking equipment including stamps, roll marking dies, roll marking and impact marking machines, fully programmable peen/scribe marking and UID/2DMatrix™ marking systems, numbering heads and special marking machines.

## Get What's Coming To You

### Need information in a hurry? Use ALOA's Fax On Demand service.

Just call 310-575-5074 and receive:

1. ALOA Index of Documents
2. Becoming a Locksmith (1pg)
3. Locksmith Career Summary (3pg)
4. Locksmith School List (2pg)
5. ACE Class Schedule (8pg)
6. Certification Information (3pg)
7. PRP Category List (1pg)
8. ALOA Membership Application (2pg)
9. ALOA List of Benefits (1pg)
10. Scholarship Application Form (1pg)
11. ALOA Video Library Order Form (1pg)
12. ALOA Membership Items Order Form (1pg)
13. Safe & Vault Technicians Association Member Application/Subscription Form (2pg)
14. ALOA Chapter Roster (3pg)
15. Legislative Action Network (2pg)
16. Legislative Action Network Newsletters (1pg)
17. Various State Laws (10pg)
18. Industry Position Pager (1pg)
19. Current Legislative Action Network Newsletters (1pg)
20. Board of Directors Nomination Form (2pg)
21. ALOA Convention Registration
22. ALOA Board Expense Reimbursement & Request Form

**ALOA continues to provide you with this and other great benefits and services!**



# 310-575-5074





# associate members

## Distributor

### 1st In Hardware, Inc.

Phone: 410-646-9900  
Fax: 410-646-0045  
www.1stinhardware.com

### Accredited Lock Supply Co.

Phone: 800-652-2835  
Fax: 201-865-0030  
www.acclock.com

### Andrews Wholesale Lock Supply

Phone: 717-272-7422  
Fax: 717-274-8659  
www.andrewslock.com

### Boyle & Chase Inc.

Phone: 800-325-2530  
Fax: 800-205-3500  
www.boyleandchase.com

### Clark Security Products

Phone: 888-784-1311  
Fax: 619-718-7333  
www.clarksecurity.com

### Cook's Building Specialties

Phone: 505-883-5701  
Fax: 505-883-5704

### Dire's Lock & Key Company

Phone: 303-294-0176  
Fax: 303-294-0198

### Direct Security Supply, Inc.

Phone: 800-252-5757  
Fax: 800-452-8600

### Discount Key Machines.Com/Busch

Phone: 800-332-8724  
Fax: 407-363-4666

### Doyle Security Products

Phone: 800-333-6953  
Fax: 612-521-0166  
www.doylesecurity.com

### Dugmore and Duncan, Inc.

Phone: 888-384-6673  
Fax: 888-329-3846

### E. L. Reinhardt Co., Inc.

Phone: 800-328-1311  
Fax: 651-481-0166  
www.elreinhardt.com

### Ewert Wholesale Hardware

Phone: 800-451-0200  
Fax: 708-597-0881

### Foley-Belsaw Company

Phone: 800-821-3452  
Fax: 816-483-5010  
www.foley-belsaw.com

### Fried Brothers Inc.

Phone: 800-523-2924  
Fax: 215-592-1255  
www.fbisecurity.com

### Hans Johnsen Company

Phone: 214-879-1550  
Fax: 214-879-1530  
www.hjc.com

### Hardware Agencies, Ltd.

Phone: 416-462-1921  
www.hardwareagencies.com

### IDN Incorporated

Phone: 817-421-5470  
Fax: 817-421-5468  
www.idn-inc.com

### Instant Hardware Delivery, Inc

Phone: 800-355-1107  
Fax: 800-663-8518

### Intermountain Lock & Supply

Phone: 800-453-5386  
Fax: 801-485-7205  
www.intermountainlock.com

### International Electronics, Inc

Phone: 800-343-9502  
Fax: 617-821-4443

### Jo Van Distributors

Phone: 416-288-6306  
Fax: 416-752-8371  
www.jovanlock.com

### Lockmasters, Inc.

Phone: 859-885-6041  
Fax: 859-885-7093  
www.lockmasters.com

### Locks Company

Phone: 800-288-0801  
Fax: 305-949-3619

### Locksmith Ledger International

Phone: 770-886-0800  
Fax: 770-889-7703  
www.lledger.com

### McDonald Dash Locksmith Supply

Phone: 800-238-7541  
Fax: 901-366-0005  
www.mcdonaldsdash.com

### Monaco Lock Co.

Phone: 800-526-6094  
Fax: 800-845-5625  
www.monacolock.com

### Omaha Wholesale Hardware

Phone: 800-238-4566  
Fax: 402-444-1664  
www.omahawh.com

### Phoenix Safe International LLC

Phone: 765-483-0954  
Fax: 765-483-0962  
www.phoenixsafeusa.com

### RA-Lock Company

Phone: 972-775-6301  
Fax: 972-775-6316  
www.ralock.com

### Security Distributors Inc

Phone: 800-333-6953  
Fax: 612-524-0166

### Security House

Phone: 905-669-5300  
Fax: 905-660-6313  
www.securityhouselock.com

### Security Lock Distributors

Phone: 800-847-5625  
Fax: 800-878-6400  
www.securitylockdistributors.com

### Southern Lock and Supply Co.

Phone: 727-541-5536  
Fax: 727-544-8278  
www.southernlock.com

### Stone & Berg Wholesale

Phone: 800-225-7405  
Fax: 800-535-5625

### The Locksmith Store Inc.

Phone: 847-364-5111  
Fax: 847-364-5125  
www.locksmithstore.com

### Timemaster Inc.

Phone: 859-259-1878  
Fax: 859-255-0298  
www.time-master.com

### Top Notch Distributors, Inc.

Phone: 800-233-4210  
Fax: 800-854-4146  
www.topnotch.bz

### Turn 10 Wholesale

Phone: 800-848-9790  
Fax: 800-391-4553

### U.S. Lock Corp.

Phone: 800-925-5000  
Fax: 800-338-5625  
www.uslock.com

### Wilson Safe Company

Phone: 215-492-7100  
Fax: 215-492-7104  
www.wilsonsafe.com

## Manufacturer

### A & B Safe Corporation

Phone: 800-253-1267  
Fax: 856-863-1208  
www.a-bsafecorp.com

### ABUS Lock Company

Phone: 800-352-2287  
Fax: 602-516-9934  
www.abus.com

### Access Security Products Ltd.

Phone: 905-337-7874  
Fax: 905-337-7873  
www.access-safe.com

### Adams Rite Mfg Company

Phone: 800-872-3267  
Fax: 800-232-7329  
www.adamsrite.com

### Adesco Safe Mfg. Company

Phone: 800-694-9340  
Fax: 562-408-6427  
www.adesco.com

### Adrian Steel Company

Phone: 800-677-2726  
Fax: 517-265-5834  
www.adriansteel.com

### Advanced Diagnostics USA Inc

Phone: 650-876-2020  
Fax: 650-876-2022  
www.ad-mvp.com

### All Five Tool Company, Inc.

Phone: 860-583-1691  
Fax: 860-583-4516  
www.all5tool.com

### American Security Products

Phone: 909-685-9680x2013  
Fax: 909-685-9685  
www.amsecusa.com

### BWD Lockcraft

Phone: 973-728-3707  
Fax: 973-728-3731  
www.bwdautomotive.com

### Bianchi USA, Inc.

Phone: 800-891-2118  
Fax: 216-803-0202

### Buddy Products

Phone: 312-733-6400  
Fax: 312-733-8356  
www.buddyproducts.com

### CCL Security Products

Phone: 800-733-8588  
Fax: 847-537-1800  
www.cclsecurity.com



# associate members

## CompX Security Products

Phone: 864-297-6655  
Fax: 864-297-9987  
www.compynet.com

## D&D Technologies (USA), Inc.

Phone: 714-677-1300x292  
Fax: 714-677-1299  
www.ddtechusa.com

## DETEX Corp.

Phone: 800-729-3839  
Fax: 800-620-6711  
www.detek.com

## Don-Jo Manufacturing, Inc.

Phone: 978-422-3213  
Fax: 978-422-3467  
www.don-jo.com

## Door Controls International

Phone: 800-742-3634  
Fax: 800-742-0410  
www.doorcontrols.com

## DoorKing Inc.

Phone: 800-826-7493  
Fax: 310-641-1586  
www.doorking.com

## FireKing Security Products

Phone: 800-457-2424  
Fax: 800-896-6606  
www.fkisecuritygroup.com

## Framon Manufacturing Company Inc.

Phone: 989-354-5623  
Fax: 989-354-4238  
www.framon.com

## HY-KO Products Co.

Phone: 330-467-7446  
Fax: 330-467-7442

## Hammerhead Industries, Inc.

Phone: 805-658-9922  
Fax: 805-658-8833  
www.gearkeeper.com

## Ingersoll Rand SSA

Phone: 317-613-8025  
Fax: 317-613-8068  
www.schlagelock.com

## Jackson Corporation

Phone: 323-269-8111  
Fax: 800-888-6855  
www.jacksonexit.com

## Jet Hardware Mfg., Co.

Phone: 718-257-9600  
Fax: 718-257-0973  
www.jetkeys.com

## KABA ILCO Corp.

Phone: 252-446-3321  
Fax: 252-446-4702  
www.kaba-ilco.com

## KEY-BAK/West Coast Chain Mfg.

Phone: 909-923-7800  
Fax: 909-923-0024  
www.keybak.com

## Keri Systems Inc.

Phone: 408-451-2520  
Fax: 408-441-0309  
www.kerisys.com

## Knaack Manufacturing Co.

Phone: 800-456-7865  
Fax: 815-459-9097  
www.weatherguard.com

## LAB Security

Phone: 800-243-8242  
Fax: 860-583-7838  
www.labpins.com

## La Gard Inc.

Phone: 310-325-5670  
Fax: 310-325-5615  
www.lagard.com

## Lock America, Inc. dba L.A.I. Group

Phone: 714-373-2993  
Fax: 714-373-2998  
www.laigroup.com

## Lucky Line Products, Inc.

Phone: 858-549-6699  
Fax: 858-549-3241  
www.luckyline.com

## M.A.G. Manufacturing

Phone: 714-891-5100  
Fax: 714-892-6845  
www.magmanufacturing.com

## MUL-T-LOCK USA, Inc.

Phone: 800-562-3511  
Fax: 973-778-4007  
www.mul-t-lockusa.com

## Major Mfg, Inc.

Phone: 714-772-5202  
Fax: 714-772-2302  
www.majormfg.com

## Maxcess Card Systems Ltd

Phone: 949-492-5964  
Fax: 949-492-0415  
www.maxcess-card.com

## Medeco Security Locks

Phone: 540-380-5000  
Fax: 540-380-5010  
www.medeco.com

## Mil-Comm Products Co Inc

Phone: 201-935-8561  
Fax: 201-935-6059

## Protex Safe Co., LLC

Phone: 818-610-8030  
Fax: 818-610-8004  
www.protexsafe.com

## ROFU International Corp.

Phone: 253-922-1828  
Fax: 253-922-1728  
www.rofu.com

## Rutherford Controls Int'l Co.

Phone: 519-621-7651  
Fax: 519-621-7939  
www.rutherfordcontrols.com

## STRATTEC Security Corp.

Phone: 414-247-3333  
Fax: 414-247-3564  
www.aftermarket.strattec.com

## Sargent & Greenleaf, Inc.

Phone: 859-885-9411  
Fax: 859-885-3063  
www.sargentandgreenleaf.com

## Sargent Manufacturing Co.

Phone: 800-727-5477  
Fax: 888-863-5054  
www.sargentlock.com

## Schwab Corp.

Phone: 765-447-9470  
Fax: 765-447-8278  
www.schwabcorp.com

## Securifort Inc

Phone: 819-359-2226  
Fax: 819-359-2218  
www.securifort.com

## Securitron Magnalock Corp.

Phone: 775-355-5625  
Fax: 775-355-5636  
www.securitron.com

## Security Door Controls

Phone: 805-494-0622  
Fax: 805-494-8861  
www.sdcsecurity.com

## Security Solutions

Phone: 405-376-1600  
Fax: 405-376-6870  
www.securitysolutions-usa.com

## Sun Safes Manufacturing Co.

Phone: 823-194-5930  
Phone: 823-194-5940

## Townsteel, Inc.

Phone: 626-858-5080  
Fax: 626-858-3393  
www.townsteel.com

## UCA Inc

Phone: 972-312-0599x12  
Fax: 972-692-7056  
www.ibuttonlock.com

## Ultra Lift Corporation

Phone: 800-346-3057  
Fax: 408-297-1199  
www.ultralift.com

## Videx Inc.

Phone: 541-758-0521  
Fax: 541-752-5285  
www.videx.com

## YSG Door Security Consultants, Inc.

Phone: 800-438-1951  
Fax: 800-338-0965

## Service Organization

### Allstate Insurance Company

Phone: 800-859-0247  
Fax: 847-551-2786  
www.allstate.com

### Cross Country Automotive Services

Phone: 800-541-2262  
Fax: 781-393-0256  
www.argosi.com

### Massglass & Door Service

Phone: 888-742-8837  
Fax: 845-735-8383  
www.mechanicgroup.com

### The Mechanic Group Inc

Phone: 845-735-0700  
Fax: 805-497-2255  
www.massglass.com

### Webster Safe & Lock Co., Inc.

Phone: 901-332-2911  
Fax: 901-332-2878  
www.webstersinc.com



# legislative update

## US H 3632

SPONSOR: LaTourette (R)  
TITLE: Electronic Premise Security Systems  
INTRODUCED: 07/29/2005  
DISPOSITION: Pending  
LOCATION: House Ways and Means Committee  
SUMMARY:

Allows a deduction for expenses related to the purchase and installation of qualifying electronic premise security systems.

STATUS:  
• 07/29/2005 INTRODUCED.  
• 07/29/2005 To HOUSE Committee on WAYS AND MEANS.

## CA A 714

AUTHOR: Ridley-Thomas (D)  
TITLE: Motor Vehicles: Key Information Access  
INTRODUCED: 02/17/2005  
LAST AMEND: 09/08/2005  
DISPOSITION: Pending - Carryover  
LOCATION: Assembly Transportation Committee

SUMMARY: Requires every motor vehicle manufacturer of a motor vehicle sold or leased in this state with a model year of 2007 or later to provide a means whereby the registered owner of that motor vehicle can access information sufficient to permit the reproduction of a key to operate the owner's vehicle 24 hours each day and 7 days each week.

STATUS:  
• 02/17/2005 INTRODUCED.  
• 09/07/2005 To ASSEMBLY Committees on TRANSPORTATION and BUSINESS AND PROFESSIONS.  
• 09/08/2005 From ASSEMBLY Committee on TRANSPORTATION with author's amendments.  
• 09/08/2005 In ASSEMBLY. Read second time and amended. Re-referred to Committee on TRANSPORTATION.

## IN H 1361

AUTHOR: Brown C (D)  
TITLE: Locksmith Registration  
INTRODUCED: 01/13/2005  
DISPOSITION: Failed - Adjourned  
LOCATION: House Public Safety and Homeland Security

SUMMARY: Requires locksmiths to be registered; requires the state police department to administer the registration program and conduct a national criminal history background check for each registration applicant.

STATUS:  
• 01/13/2005 INTRODUCED.  
• 01/13/2005 To HOUSE Committee on PUBLIC SAFETY AND HOMELAND SECURITY.  
NOTES: Locksmith Registration

## MD H 207 CROSSFILED WITH: MD S 105

AUTHOR: Hubbard (D)  
TITLE: Maryland Security Systems Training Board  
INTRODUCED: 01/24/2005  
DISPOSITION: Failed - Adjourned  
LOCATION: HOUSE

SUMMARY: Establishes the Maryland Security Systems Training Board; requires the Secretary of State Police to adopt regulations to implement training requirements for security systems technicians developed by the Maryland Security Systems Training Board; provides for the composition of the Board and the terms, removal, and compensation of the members of the Board; authorizes the Board to set specified

fees; requires the Board to set training requirement.

STATUS:  
• 01/24/2005 INTRODUCED.  
• 01/24/2005 To HOUSE Committee on ECONOMIC MATTERS.  
• 02/21/2005 From HOUSE Committee on ECONOMIC MATTERS: Reported unfavorably.  
NOTES: Security Systems Training Board

## MO S 186

SPONSOR: Loudon (R)  
TITLE: Electrical Industry Licensing Board  
INTRODUCED: 01/18/2005  
DISPOSITION: Failed - Adjourned  
LOCATION: Senate Financial and Governmental Organization, Veterans' Affairs and Elections Committee  
SUMMARY: Establishes the Missouri Electrical Industry Licensing Board and describes their powers and duties.

STATUS:  
• 01/18/2005 INTRODUCED.  
• 01/24/2005 To SENATE Committee on FINANCIAL, GOVERNMENTAL ORGANIZATIONS, AND ELECTIONS.  
NOTES: Electrical Industry Licensing Board

## MS S 2356

AUTHOR: Mettetal (D)  
TITLE: Burglar Alarms  
INTRODUCED: 01/13/2005  
DISPOSITION: Failed  
LOCATION: Died  
SUMMARY: Burglar alarms; license and regulate installation.  
STATUS:  
• 01/13/2005 INTRODUCED.  
• 01/13/2005 To SENATE Committee on BUSINESS AND FINANCIAL INSTITUTIONS.  
• 02/01/2005 Died in committee.  
NOTES: Burglar Alarm License

## NJ A 3943 IDENTICAL: NJ S 2337

SPONSOR: Johnson (D)  
TITLE: Electronic Security Systems  
PREFILED: 03/14/2005  
INTRODUCED: 05/02/2005  
DISPOSITION: Pending  
LOCATION: Assembly Regulated Professions and Independent Authorities Committee  
SUMMARY: Exempts certain businesses from licensing requirements for those engaged in burglar alarm, fire alarm and electronic security system installations.  
STATUS:  
• 03/14/2005 FILED.  
• 05/02/2005 INTRODUCED.  
• 05/02/2005 To ASSEMBLY Committee on REGULATED PROFESSIONS AND INDEPENDENT AUTHORITIES.  
NOTES: Electronic Security Systems

## PA H 1653 PN: 2080

AUTHOR: Raymond (R)  
TITLE: Vehicles Code  
PREFILED: 06/06/2005  
INTRODUCED: 06/07/2005  
DISPOSITION: Pending  
LOCATION: House Transportation Committee  
SUMMARY: Amends the Vehicles Code. Provides for duplicate vehicle keys. Prescribes a penalty.  
STATUS:  
• 06/06/2005 FILED.  
• 06/07/2005 INTRODUCED.  
• 06/07/2005 To HOUSE Committee on TRANSPORTATION.

## TN S 2024 SAME AS: TN H 1731

AUTHOR: Cooper (D)  
TITLE: Locksmith Licenses  
INTRODUCED: 02/16/2005  
LAST AMEND: 04/28/2005  
DISPOSITION: Pending - Carryover  
LOCATION: HOUSE SUMMARY:  
Requires locksmiths to be licensed; requires licenses to be obtained from the commissioner of commerce and insurance.  
STATUS:  
• 02/16/2005 INTRODUCED.  
• 02/23/2005 To SENATE Committee on GOVERNMENT OPERATIONS.  
• 03/30/2005 From SENATE Committee on GOVERNMENT OPERATIONS: Recommend passage.  
• 04/28/2005 In SENATE. Amendment No. 1 (SA0172) adopted on SENATE floor.  
• 04/28/2005 In SENATE. Amendment No. 2 (SA0173) adopted on SENATE floor.  
• 04/28/2005 In SENATE. Amendment No. 3 (SA0304) adopted on SENATE floor.  
• 04/28/2005 In SENATE. Amendment No. 4 (SA0407) adopted on SENATE floor.  
• 04/28/2005 In SENATE. Amendment No. 5 (SA0408) adopted on SENATE floor.  
• 04/28/2005 In SENATE. Read third time. Passed SENATE.  
To HOUSE.  
NOTES: Locksmith License.

## TX H 2243

AUTHOR: Jackson (R)  
TITLE: Regulation of Locksmiths and Locksmith Companies  
INTRODUCED: 03/08/2005  
LAST AMEND: 05/16/2005  
ENACTED: 06/18/2005  
DISPOSITION: Enacted  
LOCATION: Chaptered  
CHAPTER: 1102

SUMMARY: Relates to the regulation of locksmiths and locksmith companies under the Private Security Act; provides that a locksmith company or locksmith may not perform services for a customer who seeks entry to a structure, motor vehicle, or other property unless the customer, shows the locksmith company or locksmith a government-issued identification and provides a signed authorization stating that the customer or is entitled to legal access to the structure, motor vehicle, or other property.

STATUS:  
• 03/08/2005 INTRODUCED.  
• 03/14/2005 To HOUSE Committee on LICENSING AND ADMINISTRATIVE PROCEDURES.  
• 04/06/2005 From HOUSE Committee on LICENSING AND ADMINISTRATIVE PROCEDURES: Reported favorably with substitute.  
• 04/14/2005 Committee report printed and distributed.  
• 04/29/2005 Amended on HOUSE floor.  
• 04/29/2005 Passed HOUSE.  
To SENATE.  
• 05/03/2005 To SENATE Committee on BUSINESS AND COMMERCE.  
• 05/16/2005 From SENATE Committee on BUSINESS AND COMMERCE: Reported favorably with substitute.  
• 05/16/2005 Committee report printed and distributed.  
• 05/24/2005 Passed SENATE.  
To HOUSE for concurrence.  
• 05/26/2005 HOUSE concurred in SENATE amendments.  
• 06/02/2005 To GOVERNOR.  
• 06/18/2005 Signed by GOVERNOR.  
• 07/25/2005 Filed with Secretary of State. Chapter No. 1102  
NOTES: Regulation of Locksmiths and Locksmith Companies

## TX H 3140

AUTHOR: Hughes (R)  
TITLE: Private Security Regulation  
INTRODUCED: 03/11/2005  
LAST AMEND: 04/25/2005  
ENACTED: 06/18/2005  
DISPOSITION: Enacted  
LOCATION: Chaptered  
CHAPTER: 1155  
SUMMARY: Relates to exemption of certain electronic access control device or alarm system manufacturers or providers from private security regulation; provides that an alarm system does not include a telephone entry system, operator for opening or closing a residential or commercial door or an accessory to activate a gate or door that is not connected to an alarm system; provides that an electronic access control device includes a telephone entry system into an area not monitored by security personnel.  
STATUS:  
• 03/11/2005 INTRODUCED.  
• 03/21/2005 To HOUSE Committee on LAW ENFORCEMENT.  
• 04/25/2005 From HOUSE Committee on LAW ENFORCEMENT: Reported favorably with substitute.  
• 04/30/2005 Committee report printed and distributed.  
• 05/13/2005 Passed HOUSE. To SENATE.  
• 05/17/2005 To SENATE Committee on BUSINESS AND COMMERCE.  
• 05/19/2005 From SENATE Committee on BUSINESS AND COMMERCE: Reported favorably.  
• 05/19/2005 Committee report printed and distributed.  
• 05/25/2005 Passed SENATE.  
• 06/02/2005 To GOVERNOR.  
• 06/18/2005 Signed by GOVERNOR.  
• 07/25/2005 Filed with Secretary of State. Chapter No. 1155

## TX S 1365

AUTHOR: Armbrister (D)  
TITLE: Alarm Systems  
INTRODUCED: 03/10/2005  
DISPOSITION: Failed - Adjourned  
LOCATION: Senate Intergovernmental Relations Committee  
SUMMARY: Relates to the regulation of alarm systems and alarm systems companies.  
STATUS:  
• 03/10/2005 INTRODUCED.  
• 03/21/2005 To SENATE Committee on INTERGOVERNMENTAL RELATIONS.  
NOTES: Alarm Systems definition change.

## WI S 210

AUTHOR: Leibham (R)  
TITLE: Motor Vehicle Key  
INTRODUCED: 05/19/2005  
DISPOSITION: Pending  
LOCATION: Senate Natural Resources and Transportation Committee  
SUMMARY: Relates to reproduction of a motor vehicle key based upon the vehicle's identification number. Provides a penalty.  
STATUS:  
• 05/19/2005 INTRODUCED.  
• 05/19/2005 To SENATE Committee on NATURAL RESOURCES AND TRANSPORTATION.



*Your customers*

# Trust

*you to recommend  
the best protection money can buy.*

*And here it is.*



ADESCO FIREKING/GARY MEILINK

FOR SAFES THAT FIT EVERY NEED AND BUDGET, COUNT ON THE TRUSTED BRANDS OF FIREKING® SECURITY GROUP. ADESCO® OFFERS SAFES FOR GOVERNMENT, COMMERCIAL AND RESIDENTIAL CUSTOMERS. MEILINK® PROVIDES FIRE- AND BURGLARY-RATED SAFES FOR BANKS, SCHOOLS AND RETAIL ESTABLISHMENTS. AND FIREKING FEATURES UL®-RATED FIRE/IMPACT/BURGLARY RESISTANT SAFES BACKED BY OVER 50 YEARS OF SECURITY EXPERIENCE. PLUS, EACH BRAND COMES WITH EXCLUSIVE 24/7/365 TECHNICAL SUPPORT. SO FIND OUT MORE ABOUT FIREKING SECURITY GROUP. YOUR CUSTOMERS TRUST YOU TO RECOMMEND THE BEST. TRUST US TO PROVIDE IT.

*Call FireKing Security Group at 800-457-2424*

**FireKing**  
SECURITY GROUP  
[www.fireking.com](http://www.fireking.com)





keynotes

# BUYER'S MARKETPLACE

You need it When?

How about now!? :-)

★  
ClearStar  
Security  
Network

24

7

Another Special  
Value-added Benefit to your

ALOA Membership!

Click here...

[www.clearstar.com/ALOA](http://www.clearstar.com/ALOA)

Accept Credit Cards!  
In your Locksmithing Business,  
Storefronts/Offices/Homebased  
Businesses



\*\*No application fees\*\*  
\*\*No Monthly Minimum\*\*  
\*\*No Lease Requirements\*\*  
\*\*Onsite wireless terminals available\*\*

**RETRIEVER PAYMENT  
SYSTEMS**  
**888-549-6424**

**IN-STOCK...MORE SAFES**

*FREE Freight Program*  
(30 States)

**AMSEC** FireKing  
**Gardall** HAYMAN  
**MEILINK** **VICTOR**

**TURN 10**  
WHOLESALE SERVICE

**800-848-9790**

## New! Keedex Stainless Steel Armored Door Loops



ALL  
STAINLESS STEEL  
DESIGN

FLEXIBLE STAINLESS  
STEEL CONDUIT

STAINLESS STEEL  
END PIECES

STAINLESS STEEL  
MOUNTING SCREWS

COSTS NO MORE  
THAN MOST DOOR  
LOOPS THAT HAVE  
PLASTIC END PIECES

AVAILABLE FROM YOUR  
KEEDEX DISTRIBUTOR

MADE IN U.S.A.

*Call or write today  
for your free catalog!*

**KEEDEX**

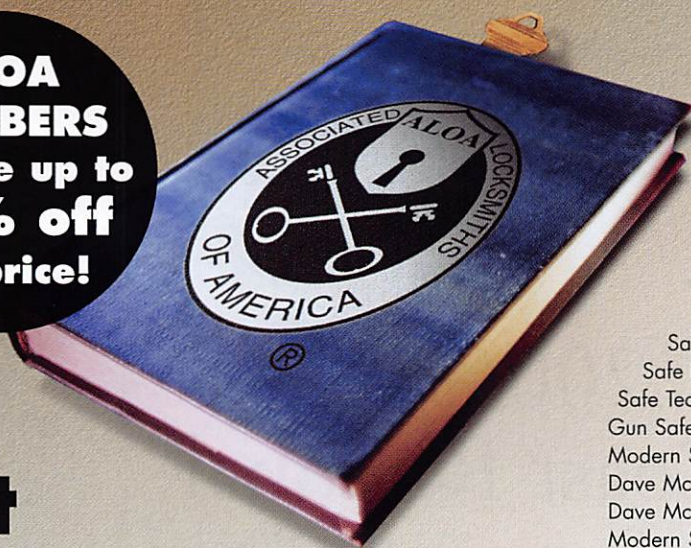
"Ideas That Work"

Keedex, Inc.  
12931 Shackelford Lane  
Garden Grove, CA 92841  
714-636-5657 • Fax: 714-636-5680  
e-mail: [info@keedex.com](mailto:info@keedex.com)  
[www.keedex.com](http://www.keedex.com)



# Now Available at ALOA.org

**ALOA  
MEMBERS  
Receive up to  
25% off  
list price!**



## Just a Few of Our Titles...

Learn About Basic Electricity .....	29.95
Spacing and Depths, vol 1 .....	19.95
Spacing and Depths, vol 2 .....	19.95
Filing for Dollars .....	29.95
Antique Padlocks .....	29.95
VATS Made Simple (Revised) .....	29.95
Guide to Transponders .....	79.00
2000 Transponder Update .....	45.00
Bread & Butter .....	85.00
Locks and Lockmakers of America .....	19.95
Learn About Electronic Locking Devices .....	29.95
The Best of Locksmithing, vol 1 .....	19.95
Logical Lock Diagnostics .....	29.99
How to Pick Lever Locks .....	19.95
Fundamentals of Master Keying .....	55.00
Guide to Electronic Locksmithing .....	39.95
Security Solutions Locksmith Marketing Program .....	89.95
The Ultimate Techtips Collection .....	39.95

PRP Resource Guide .....	25.00
Locksmithing from Apprentice to Master .....	27.00
Wafer Lock Reading .....	19.95
Door Lock Encyclopedia .....	39.95
Lock Repair Manual .....	14.95
Interchangeable Core Cylinders .....	34.95
Picking & Impressioning .....	45.00
The Lure of the Lock .....	29.95
High Security Safes, vol 1 .....	175.00
High Security Safes, vol 2 .....	175.00
Safeman's Guide, vol 13 .....	9.95
Safe Deposit Depth and Space Manual .....	99.00
Safe Technician's Reference Manual .....	155.00
Gun Safes .....	110.00
Modern Safe Opening .....	59.95
Dave McOmie on Vault Doors, vol 1, Bank Vaults .....	110.00
Dave McOmie on Vault Doors, vol 2, Fire and Plate Vaults .....	110.00
Modern Safe Locks .....	95.00
Drilling Safes .....	95.00
Safe Deposit Box Service .....	39.95
Foreign Car Impressioning Book .....	29.95
Impressioning Ford and GM Side Bar Locks .....	29.95
Automotive Lock Servicing Update #1: GM 10-Cut Locks .....	29.95
Automotive Lock Servicing Update #2: GM 10-Cut Locks .....	29.95
Automotive Lock Servicing Update #3: GM 8-Cut Locks .....	29.95
GM Locks: Perfect for the Beginning Locksmith! .....	29.95
Ford Locks: Pin Tumbler and Ten-Cut Systems .....	29.95
Chrysler Pin Tumbler Locks .....	29.95
Chrysler Double-Bitted Locks .....	29.95
Toyota Split-Tumbler Locks .....	29.95
Basic Door Panel Servicing .....	29.95
Advanced Door Panel Servicing .....	29.95
Motorcycles on CD .....	99.00
The Guide to Motorcycles .....	99.00
Japanese High Security Auto Servicing .....	29.95
Revised GM Steering Column Course .....	115.00
Foreign & Domestic Auto Service .....	69.95
Auto Lock Service .....	14.95
The Sieveking Auto Key Guide & Illustrated Cross Reference .....	27.00
Servicing Interchangeable Cores—Sargent .....	25.00
Servicing interchangeable Cores—Arrow, Best, Eagle, Falcon, and Lockwood .....	25.00
The Ultimate CCTV Program on CD Rom .....	595.00

**Visit the new-and-improved ALOA Store to view more available titles.  
Place your order online or by phone today!  
www.aloa.org • (214) 819-9733 • Please allow 3-4 weeks for delivery.**



# *The Master Locksmiths Association Of New Jersey*



2006  
East Coast Regional  
Lock & Security Show  
(Classes, Trade Show, and Banquet)

***March 16th thru March 19th***

Crowne Plaza Meadowlands Hotel  
2 Harmon Drive  
Secaucus, NJ 07094

For more information:  
P.O. Box 2441  
Morristown, NJ 07962-2441  
Fax 973-538-1588 or visit [www.MLANJ.org](http://www.MLANJ.org)



Alberto, 11 years  
Machine Operator

Raymond, 4 years  
Accounting

Shirley, 23 years  
Lock Assembly

# Proud to serve *you*

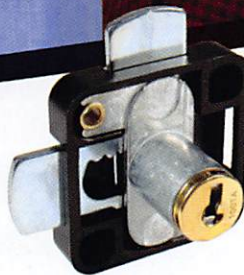
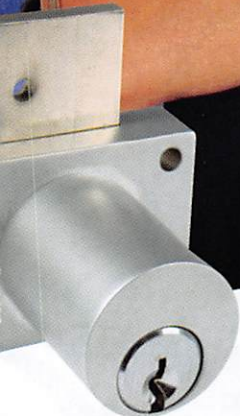
**We represent the 500 employees  
of CompX Security Products.**

Hardworking. Reliable. Dedicated.

And it shows in the products we make.

Is it any surprise that, year after year, you the locksmith  
community, choose to partner with us?

Made in America does matter to you, and it matters to us.  
Through our four US facilities, we will continue to provide  
you with the high quality products you have come to expect  
from CompX Security Products.



**CompX**  
NATIONAL

**CompX**  
FORT

**CompX**  
TIMBERLINE

**CompX**  
CHICAGO



# NGS NOW CAN!

## New Generation STAR XL CAN Transponder Programmer

Your key to unlocking Ford/Lincoln and Mazda Transponder profits

The most reliable unit available for transponder key programming and PATS system diagnostics on ALL Ford Lincoln/Mercury and Mazda\* vehicles.

**\$2995**

**NGS XL CAN  
Locksmith 8008LXLC**

### NGS XL CAN Locksmith Kit 8008LXLC

- NGS XL Tester and Locksmith VIM
- NGS XL CAN VIM
- 1996-Current Model Year Ford Transponder PATS Reprogramming Software
- FREE - 2 Additional Years of Software
- 81204 - CAN Vehicle Interface Cable
- 81205 - CAN Power Cable
- 800N - OBDII/EEC-V Cable
- H105-00100 - Central Security Module Cable
- NGS/Locksmith/PATS Instruction Manual
- Key Blank/System Quick Reference Card
- Transponder Marketing Support Pack
- Blo-molded Carrying Case
- 13 Month Warranty

### NGS CAN VIM Kit 81201L

- NGS CAN Vehicle Interface Module (VIM)
- 81204 - CAN Vehicle Interface Cable
- 81205 - CAN Auxiliary Power Cable
- 2003-2005 CAN Software Card
- 2005 Non-CAN Software Cards
- Operator's Manual
- Key Blank Quick Reference Chart

8008LXLC

**CAN VIM  
81201L**

**\$69.**

81201L

**CAN Vehicle Interface Module and Current Model Software Update now available.**



**TOLL FREE TECH SUPPORT**  
800/342-5080

**HICKOK**  
INCORPORATED

Visit [www.hickok-inc.com](http://www.hickok-inc.com)